

# LUXE

A Makower UK Collection

**FREE**  
Downloads



Projects by Lynne Goldsworthy of @lilysquilts

Finished project sizes

Quilt 72" square (1.8m sq)

Butterfly Table Runner 16" x 54" (40cm x 1.4m)

Butterfly Cushions 18" sq (45cm sq)



**Butterfly Quilt**  
**72" square (1.8m sq)**

SKU	Print	Requirement	Cut
2566 Q2	Cream Metallic Linen Texture	6m / 6 yds	See cutting instructions and cut as required for FPP
2566 B10	Navy Metallic Linen Texture	1 m / 1 yd	Cut as required for FPP and cut: Four 3 ½" squares Two ¾" x 14 ½" strips Four ¾" x 3 ½" strips
2610 P	Large Floral Pink	FQ	Four 4 ½" x 6 ½" rectangles Two 4 ½" x 11 ½" rectangles
2610 P	Large Floral Pink (binding)	70 cms / ¾ yd	Eight 2 ½" WOF strips
2610 B	Large Floral Navy	F8th	Four 4 ½" x 6 ½" rectangles
2610 Q	Large Floral Cream	F8th	Two 4" x 12 ½" rectangles
2611 N	Scallop Rust	FQ	Four 5" x 6" rectangles Two 3" x 7" rectangles
2611 P	Scallop Pink	FQ	Four 5" x 6" rectangles Two 3 ½" x 7" rectangles
2611 G	Scallop Green	FQ	Four 5" x 6" rectangles Four 3 ½" squares
2612 P	Damask Birds Pink	FQ	Four 4 ½" x 6 ½" rectangles Two 4 ½" squares
2612 B	Damask Birds Navy	F8th	Four 4 ½" x 6 ½" rectangles
2613 Q	Butterflies Cream (backing)	4.25m / 4 ½ yds	Cut into two equal lengths
2613 G	Butterflies Green	F8th	Four 4 ½" x 6 ½" rectangles
2613 N	Butterflies Pink	FQ	Four 4 ½" x 6 ½" rectangles Two 4" x 8" rectangles
2614 N	Seed Heads Rust	FQ	Four 4 ½" x 6 ½" rectangles Two 3" x 5" rectangles
2614 P	Seed Heads Pink	FQ	Four 5" x 6" rectangles Two 3 ½" x 5" rectangles
2615 N	Paisley Rust	FQ	Four 5" x 6" rectangles Two 3 ½" x 7" rectangles
2615 P	Paisley Pink	FQ	Four 5" x 6" rectangles Two 3" x 5 ½" rectangles
2616 P	Mini Floral Pink	FQ	Four 5" x 6" rectangles Two 3 ½" x 7" rectangles
2616 B	Mini Floral Navy	F8th	Four 5" x 6" rectangles
2616 Q	Mini Floral Cream	FQ	Four 4 ½" x 6 ½" rectangles Two 4" x 6 ½" rectangles
Wadding	279 Cotton Mix 80:20 from <a href="http://www.vlieseline.com/en/">http://www.vlieseline.com/en/</a>		80" square
Fusible Web	Bondaweb from <a href="http://www.vlieseline.com/en/">http://www.vlieseline.com/en/</a>		25cms / ¼ yard
Templates	One of each of the large butterfly templates (TL1-4, TR1-4, BL1-4 and BR1-4) One of each of the large butterfly body templates (Body 1 and Body 2) Sixteen of each of the small butterfly templates (STL, SBL, STR, SBR) and the small body templates One Antennae template		
Thread	Aurifil 50wt for piecing and 40wt for quilting from <a href="http://www.aurifil.com">http://www.aurifil.com</a>		

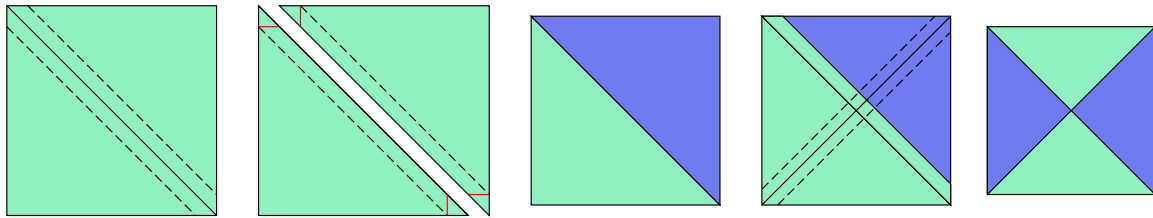
## Notes:

Make sure to visit <http://www.makoweruk.com/projects/> to ensure you are working from the most up-to-date version of the pattern

- Makower UK provides the written instructions only to accompany the named collection. Retailers are able to use these free instructions to provide a fabric kit. Accurate cutting of fabric is down to the individual retailer and any fabric supply enquires should be directed to point of purchase
- Read the pattern in full before starting
- ¼" seams are used throughout except where stated otherwise
- Press after each seam, pressing seams open or to one side as preferred
- WOF - width of fabric - a strip of fabric cut from selvedge to selvedge
- WOFQ - width of fat quarter - a strip of fabric cut from selvedge to centre cut from a FQ
- BKG – background
- HST – half square triangle
- QST – quarter square triangle
- This pattern uses foundation paper piecing (FPP). You can find a useful tutorial here if you are not familiar with this technique: <https://www.gathered.how/sewing-and-quilting/quilting/how-to-foundation-paper-piece-patchwork/>

## Making the large butterfly

1. Cut the fabrics as shown in the fabric requirements table. We have given guideline sizes for cutting the butterfly print fabrics for the foundation paper piecing. Confident foundation paper piecers may prefer to cut their own sized pieces and new foundation paper piecers may choose to cut these pieces a little larger for more comfort in the placement of the fabrics.
2. Cut the navy and cream metallic fabrics as required for FPP and the cream metallic (BKG) as follows:
  - One 4 ½" WOF strip cut into two 4 ½" x 12" strips
  - One 1 ½" WOF strip cut into two 1 ½" x 17" strips
  - One 3" WOF strip cut into one 9 ½" length, one 2 ¾" x 26 ½" strip and two 2½" squares (cut each square in half on the diagonal)
  - One 2 ¾" WOF strip cut into on 26 ½" length
  - Two 3 ½" WOF strips cut into two 40 ½" strips
  - Seven 3 ½" WOF strips sewn end to end and cut into four 12 ½", eight 16 ½" and two 40 ½" lengths
  - One 8 ½" WOF strip cut into two 12 ½" lengths
  - Two 2 ½" WOF strips cut into four 20 ½" lengths
  - Four 2 ½" WOF strips cut into ten 12 ½" lengths
3. You will make the wings of the large butterfly using four FPP templates. These are designated top right, bottom right, top left and bottom left. Each of these templates comes in four parts which need to be taped into one large template by taping together along the coloured lines – match red to red, blue to blue etc. The top wing templates will measure 14" x 17" and the bottom wing templates 12" x 13" once assembled.
4. FPP the top wing templates using the butterfly print fabrics for sections 1, 3, 5, 7, 9 and 11, the navy metallic linen texture fabric for sections 2, 4, 6, 8, 10, 12, 13, 14, 15, 16, 17, 18, 20 and 21 and the cream linen texture fabric (BKG) for sections 19 and 22-26.
5. FPP the bottom wing templates using the butterfly print fabrics for sections 1, 3, 5, 7, 9 and 11, the navy metallic linen texture fabric for sections 2, 4, 6, 8, 10 and 12-18 and the BKG for sections 19-24.
6. Sew BKG 4 ½" x 11" strips to the left wide of the left bottom wing and the right side of the right bottom wing then BKG 1 ½" x 17" strips to the bottom of each of these.
7. Sew the bottom wing to the top wing for each side.
8. For the centre of the butterfly body, you will make eight quarter square triangle (QST) units.
9. To make each pair of QSTs, draw diagonal lines on the back of a green 3 ½" square. Pair that square right sides together with a navy 3 ½" square. Sew two seam lines ½" each side of the drawn line (fig 1).



figs 1-5

10. Cut in half, trim off corners (fig 2) and press open (fig 3) to yield two half square triangles (HSTs).
11. Place two of these HSTs right sides together but with the fabrics in opposition to each other (navy facing green and green facing navy). Draw a diagonal line on the back of one and sew lines  $\frac{1}{4}$ " either side of the line (fig 4).
12. Trim corners, press open and trim to  $2\frac{1}{2}$ " square to finish each QST unit (fig 5).
13. Unpick the seams on one of the QSTs and retain the two green triangles.
14. Sew the remainder of the QSTs into one long strip and sew the green triangles onto each end (fig 6).
15. Sash the sides of this strip with navy  $\frac{3}{4}$ " x  $14\frac{1}{2}$ " strips then sash the points of the green triangles with the navy  $\frac{3}{4}$ " x  $3\frac{1}{2}$ " strips and trim off excess (fig 6).

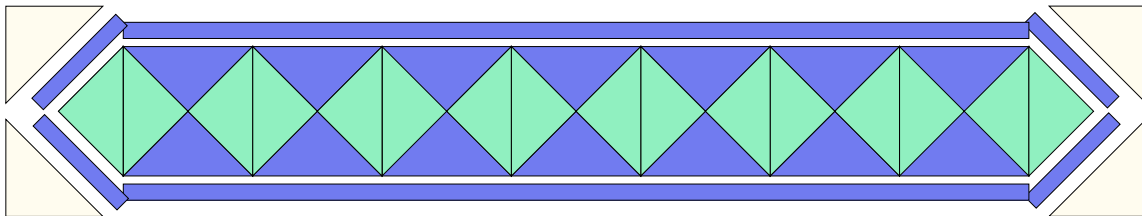


fig 6

16. Sew the triangles cut from BKG  $2\frac{1}{2}$ " squares onto one side of the end points of this strip (fig 6) and trim off excess.
17. Sew a BKG  $3$ " x  $9\frac{1}{2}$ " strip to one end of this strip.
18. Sew the wings to either side of the butterfly body.
19. Use the antennae template to trace two antennae onto a sheet of fusible web. Fuse to the back of a piece of navy metallic fabric. Cut out. Fuse to the top of the butterfly body using the antenna template as a guideline for placement. Secure in place by stitching all round.
20. Sash the sides of this piece with BKG  $2\frac{3}{4}$ " x  $26\frac{1}{2}$ " strips and the top and bottom with BKG  $3\frac{1}{2}$ " x  $40\frac{1}{2}$ " strips.

### Making the small butterflies

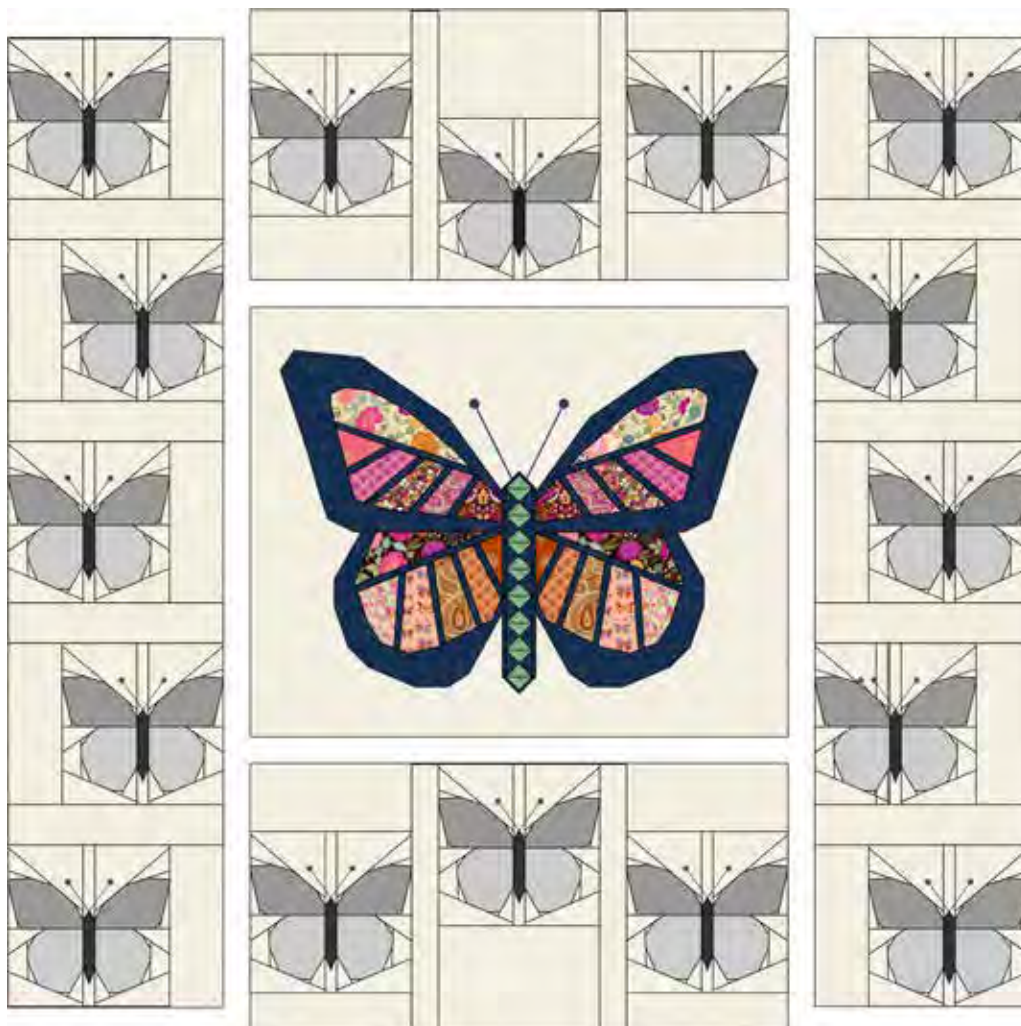
1. You will make sixteen small butterflies. Each is made by FPPing five templates – the four small wing templates and the body template. The body template is in two parts and should be taped together at the red lines.
2. FPP each wing template using the butterfly prints for section 1 and the BKG for the remaining sections. FPP the body templates using the navy metallic fabric for section 1 and the BKG for the remaining sections.
3. Sew the top wing sections to the bottom wing sections and these to either side of the body section.
4. Use the pale grey antenna guidelines to mark antenna shapes onto the butterflies with an erasable marker. Use these lines as a guide to hand or machine embroider the antennae onto each small butterfly.

## Assembling the quilt top (fig 7)

1. Decide on the layout of the small butterflies or copy the layout we chose in the main quilt image.
2. For the row along the top, sew BKG 3 ½" x 12 ½" pieces onto the top of the two end butterflies and BKG 5 ½" x 12 ½" pieces onto the bottom of each of those. Sew a BKG 8 ½" x 12 ½" piece into the top of the centre butterfly.
3. Repeat for the row along the bottom but reversing the position of the BKG strips above and below the butterflies.
4. Sash the three butterflies in each row together using two BKG 2 ½" x 20 ½" strips per row.
5. For the left hand column, sew BKG 4 ½" x 12 ½" strips to the right side of the top, middle and bottom butterflies and to the left side of the other two.
6. Repeat for the right hand column but swapping the strips to the other side of each butterfly.
7. Sash the five butterflies in each column together using four BKG 3 ½" x 16 ½" strips per column.
8. Sew the top and bottom rows to the top and bottom of the large butterfly and the left and right columns to the left and right side of the large butterfly to finish the quilt top.

## Finishing the quilt

1. Sew the binding strips end to end using diagonal or straight seams as preferred and press wrong sides together along the length to make a double fold binding.
2. Sew the two backing pieces together and trim to 80" square.
3. Make a quilt sandwich, basting together the back, the wadding and the top. Quilt as desired then trim square, removing excess wadding and backing.
4. Bind, taking care to mitre the corners.



**Butterfly Cushions**  
**18" sq (45cm sq)**

SKU	Print	Blue cushion	Cream cushion
2566 Q2	Cream Metallic Linen Texture	F8th	1 m / 1yd
2566 B10	Navy Metallic Linen Texture	1 m / 1yd	F8th
2610 P	Large Floral Pink	F8th	
2610 P	Large Floral Pink (binding)	FQ	FQ
2610 Q	Large Floral Cream	F8th	
2611 N	Scallop Rust		F8th
2611 P	Scallop Pink	F8th	
2611 G	Scallop Green		F8th
2612 P	Damask Birds Pink	F8th	
2612 B	Damask Birds Blue		F8th
2613 Q	Cream butterflies (cushion backs)	75 cms / ¾ yard	75 cms / ¾ yard
2613 G	Green butterflies		F8th
2613 N	Butterflies Pink	F8th	
2614 N	Seed Heads Rust		F8th
2614 P	Seed Heads Pink	F8th	
2615 N	Paisley Rust		F8th
2615 P	Paisley Pink	F8th	
2616 P	Mini Floral Pink	F8th	
2616 B	Mini Floral Navy		F8th
2616 Q	Mini Floral Cream		F8th
Wadding	279 Cotton Mix 80:20 from <a href="http://www.vlieseline.com/en/">http://www.vlieseline.com/en/</a>		20" / 50cm sq per cushion
Templates	Four of each of the 8" butterfly templates (STL, SBL, STR, SBR) and the 8" body templates per cushion		
Thread	Aurifil 50wt for piecing and 40wt for quilting from <a href="http://www.aurifil.com">http://www.aurifil.com</a>		

**Making the cushions**

- For each of the butterflies, you will foundation paper piece one set of 8" templates using the butterfly prints for section 1 on the wing templates, the F8th of linen texture for section 1 on the body templates and the background linen texture fabrics (BKG) for the remaining sections. If you wish to pre-cut the butterfly wing pieces, we suggest cutting the pieces to 3 ½" x 4 ½".
- Cut the linen textures as required for the FPP and the BKG for each cushion as follows: two 1" x 8 ½", one 1" x 17", two 1 ¼" x 17" and two 1 ¼" x 18 ½" strips.
- Cut the fabric for the cushion back into one 20" x 15" and one 20" x 10" rectangle (portrait style).
- Cut the binding fabric into four 2 ½" WOFQ strips.
- Foundation paper piece the templates.
- Sew the top and bottom wings together and sew these to either side of the body section for each butterfly.
- Use the pale grey antenna guidelines to mark antenna shapes onto the butterflies with an erasable marker. Use these lines as a guide to hand or machine embroider the antennae onto each butterfly.
- Sash the butterflies into two rows of two with the BKG 1" x 8 ½" strips in between.
- Sash these two rows together using the BKG 1" x 17" strip.
- Sash the sides of the cushion top with the shorter BKG 1 ¼" wide strips and then the top and bottom with the longer strips.

## Finishing each cushion

1. Sew the binding strips end to end using diagonal or straight seams as preferred and press wrong sides together along the length to make a double fold binding.
2. Make a quilt sandwich, basting together the back (if you are using a back), the wadding and the top.
3. Quilt as desired then trim square, removing excess wadding and backing.
4. Hem one vertical edge of each of the backing pieces – hem the right side of one piece and the left side of the other piece.
5. Overlap one backing piece over the other, pin to the cushion front, wrong sides together, zigzag around the four edges to secure and trim away excess backing fabric.
6. Bind, taking care to mitre the corners.

### Butterfly Table Runner 16" x 54" (40cm x 1.4m)

SKU	Print	Requirement
2566 Q2	Cream Metallic Linen Texture (BKG)	2m / 2 yds
2566 B10	Navy Metallic Linen Texture	F8th
2610 P	Large Floral Pink (including binding)	50cms / ½ yd
2610 B	Large Floral Navy	F8th
2610 Q	Large Floral Cream (Backing)	1.25m / 1 ¼ yds
2611 N	Scallop Rust	F8th
2611 P	Scallop Pink	F8th
2612 B	Damask Birds Navy	F8th
2613 N	Butterflies Pink	F8th
2614 P	Seed Heads Pink	F8th
2615 P	Paisley Pink	F8th
2616 B	Mini Floral Navy	F8th
2616 Q	Mini Floral Cream	F8th
Wadding	279 Cotton Mix 80:20 from <a href="http://www.vlieseline.com/en/">http://www.vlieseline.com/en/</a>	50cm x 150cm / 20" x 60"
Templates	Five of each of the 8" butterfly templates (STL, SBL, STR, SBR) and the 8" body templates	
Thread	Aurifil 50wt for piecing and 40wt for quilting from <a href="http://www.aurifil.com">http://www.aurifil.com</a>	

## Making the table runner

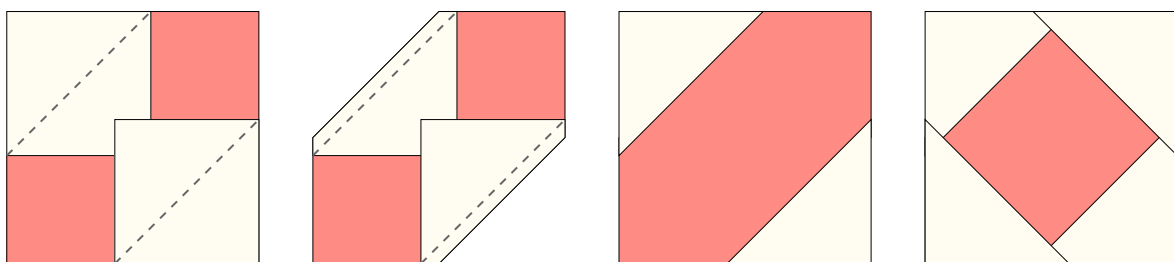
1. For each of the butterflies, you will foundation paper piece one set of 8" templates using the cream linen texture fabric for background, the navy linen texture for the body of the butterfly and the butterfly prints for section 1 on the wing templates. If you wish to pre-cut the butterfly wing pieces, we suggest cutting the pieces to 3 ½" x 4 ½".
2. Cut the remainder of each of the butterfly prints into seven 2 ½" squares (you will need sixty-six in total).
3. Cut BKG as required for the FPP and as follows:
  - Three 3" WOF strips cut into ten 3" x 10" rectangles – cut three in half on the diagonal top left to bottom right and two on the diagonal top right to bottom left
  - Two 2 ½" WOF strips cut into five 2 ½" x 10 ½" strips
  - Ten 1 ½" WOF strips cut into two hundred and sixty four 1 ½" squares
4. Cut the backing fabric into two equal lengths.
5. Cut four 2 ½" WOF strips from the binding fabric.

6. Foundation paper piece the templates using the butterfly prints for section 1 on the wing templates and the BKG for the remaining sections and using the navy linen texture on the butterfly body and the BKG for the remaining sections.
7. Sew the top and bottom wings together and sew these to either side of the body section for each butterfly.
8. Use the pale grey antenna guidelines to mark antenna shapes onto the butterflies with an erasable marker. Use these lines as a guide to hand or machine embroider the antennae onto each butterfly.
9. Sew the BKG triangles cut from 3" x 10" rectangles onto two opposite sides of each butterfly, press over and trim off excess fabric. Then sew the remaining two triangles onto the other two sides, press over and trim the whole piece to 10 1/2" square. Three of the butterflies will be orientated at one angle and the other two at the other angle (see figs 1-4).



figs 1-4

10. Sew BKG 2 1/2" x 10 1/2" strips onto the bottom of the left, right and centre butterflies and onto the top of the other two butterflies.
11. Sew the butterflies into a row alternating the angles as shown in the main table runner image.
12. You will make sixty-six economy squares using the 2 1/2" squares of butterfly fabric and the 1 1/2" squares of BKG fabric.
13. To make these, draw diagonal lines on the back of the 1 1/2" squares. Place two of these rights sides together with one of the print squares and sew along the drawn diagonal lines (fig 5).
14. Trim off excess fabric beyond the 1/4" seam line (fig 6) and press over (fig 7). Repeat for the remaining two corners (fig 8).



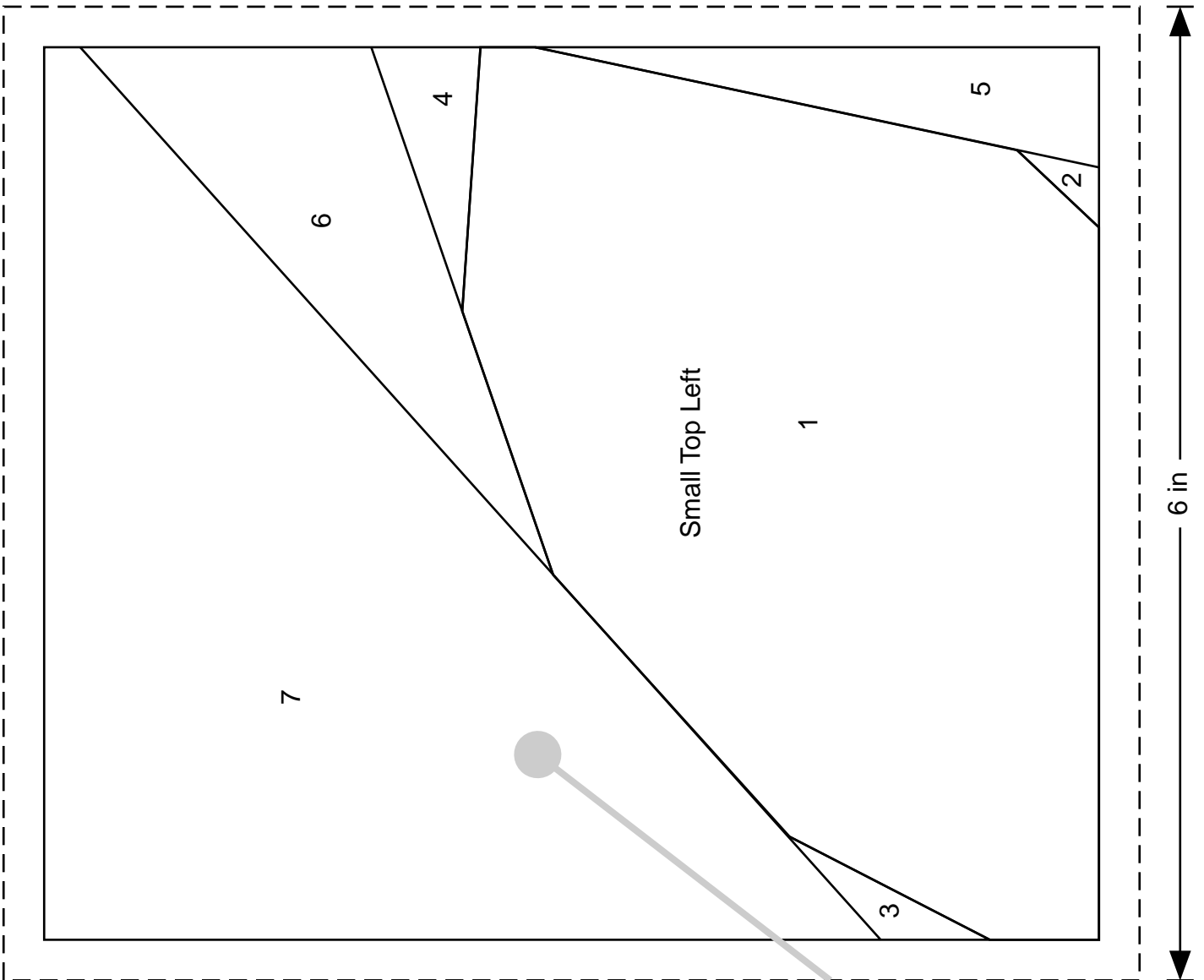
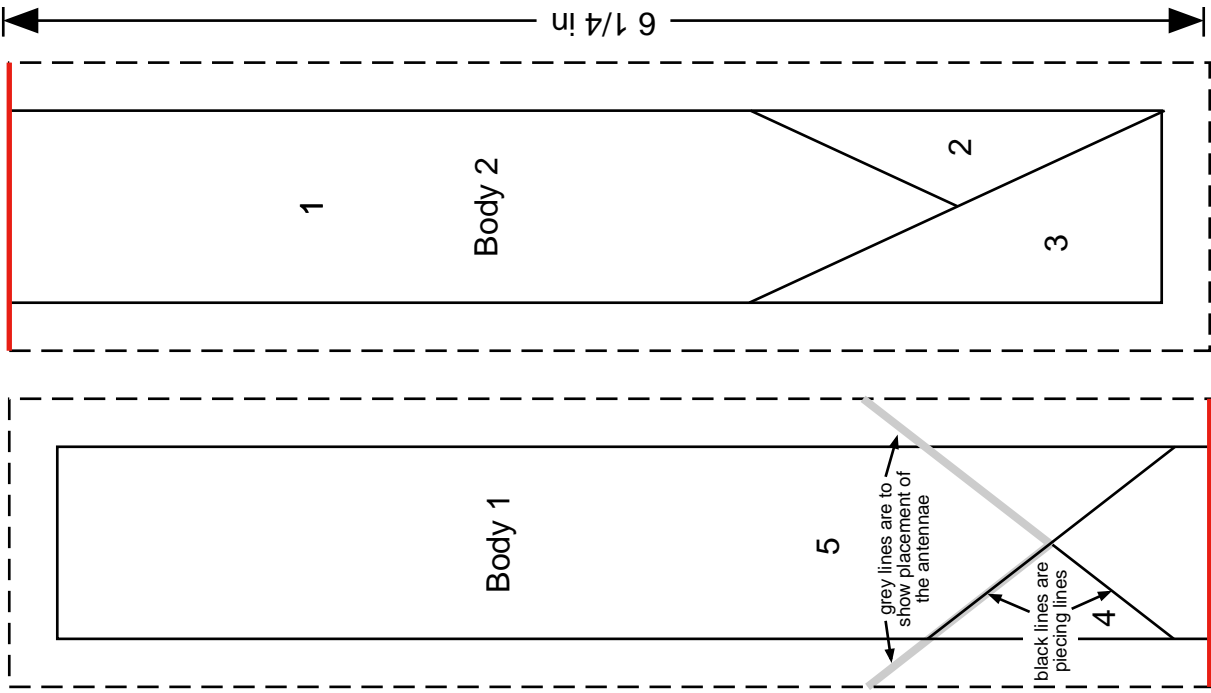
figs 5-8

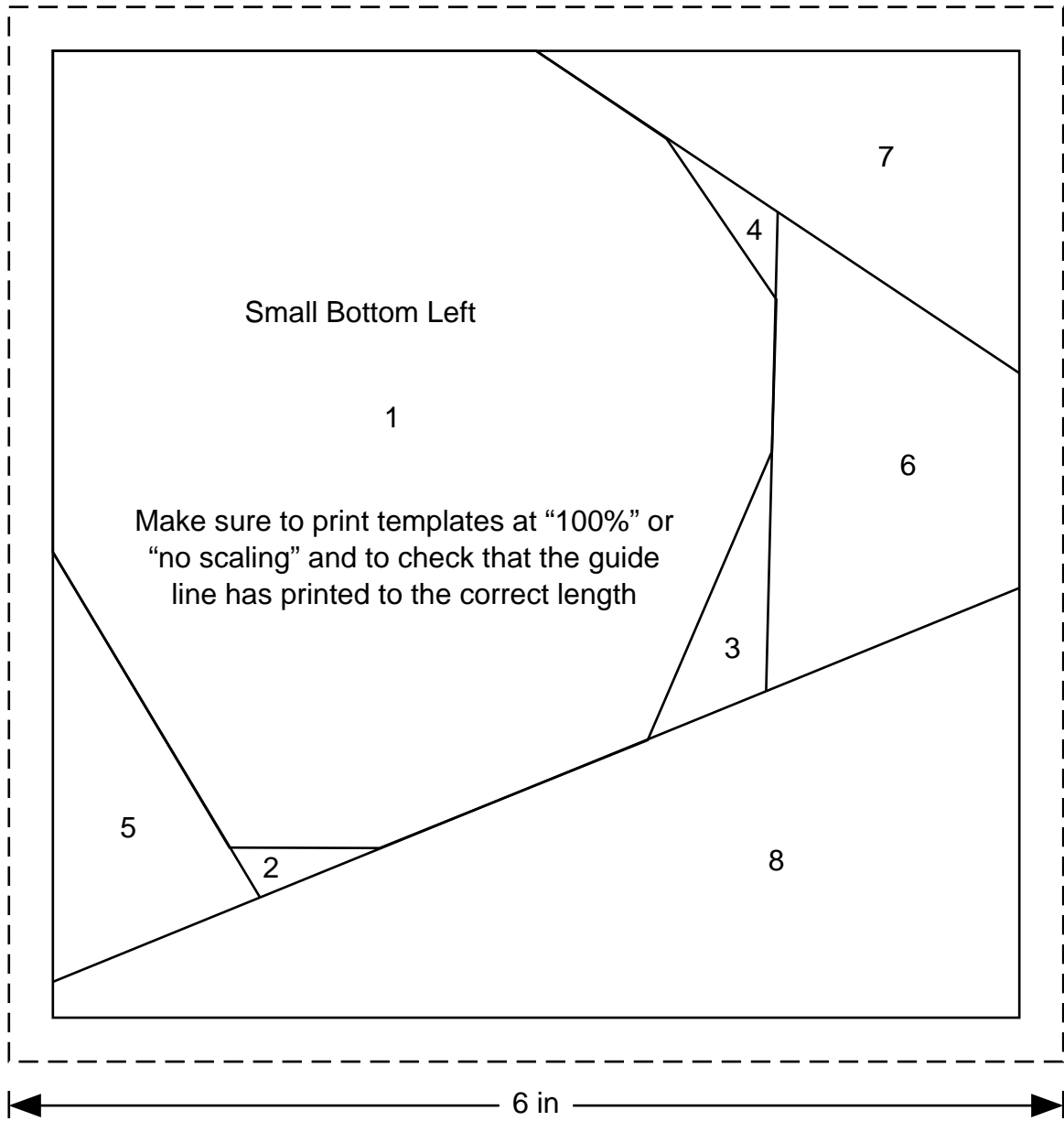
15. Sew the economy squares into two strips of twenty-seven and two strips of six.
16. Sew the shorter strips to the ends of the table runner and the longer strips to the top and bottom.

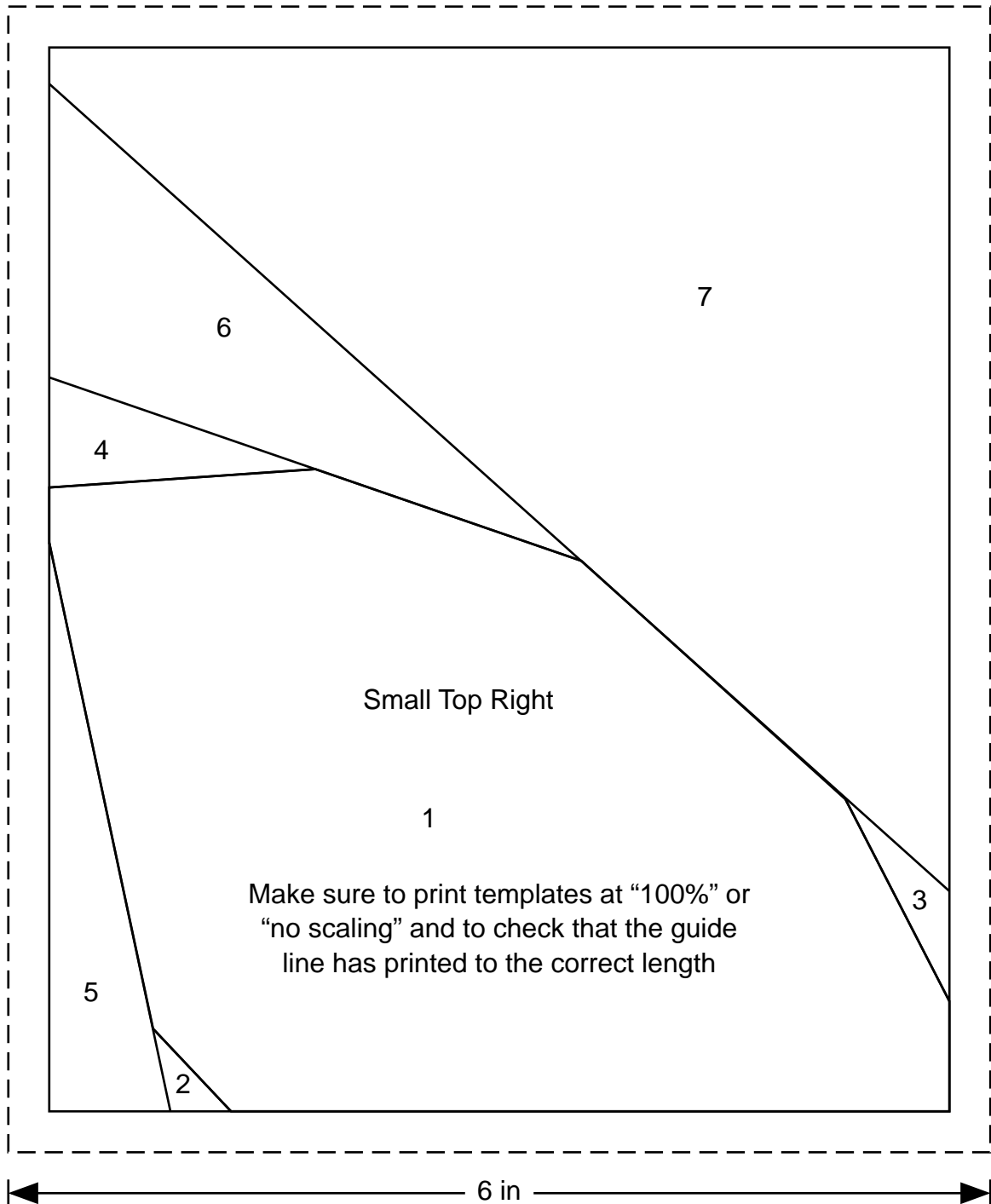
### Finishing the runner

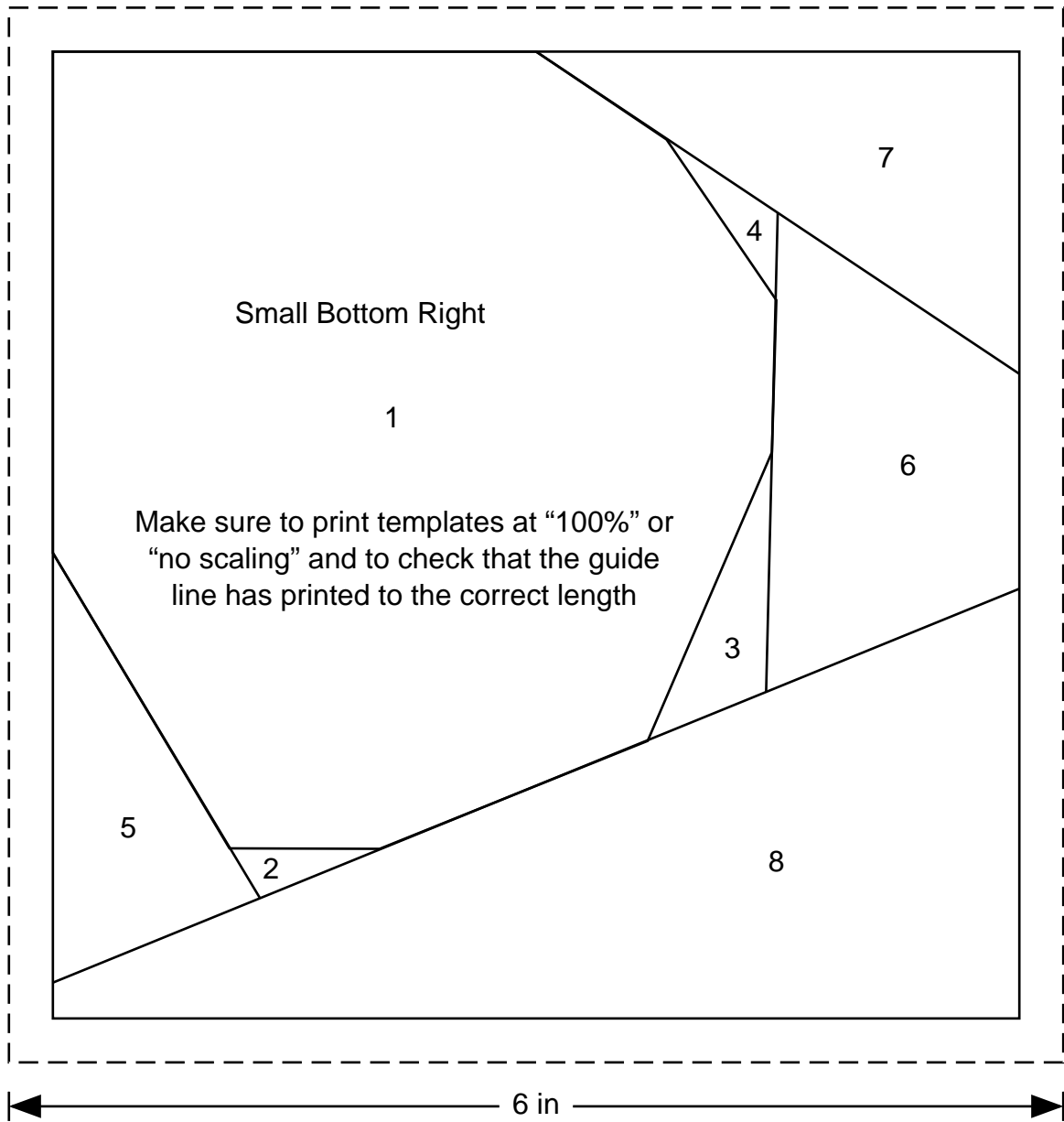
17. Sew the binding strips end to end using diagonal or straight seams as preferred and press wrong sides together along the length to make a double fold binding.
18. Sew the two backing pieces together and trim to 20" x 60".
19. Make a quilt sandwich, basting together the back, the wadding and the top. Quilt as desired then trim square, removing excess wadding and backing.
20. Bind, taking care to mitre the corners.

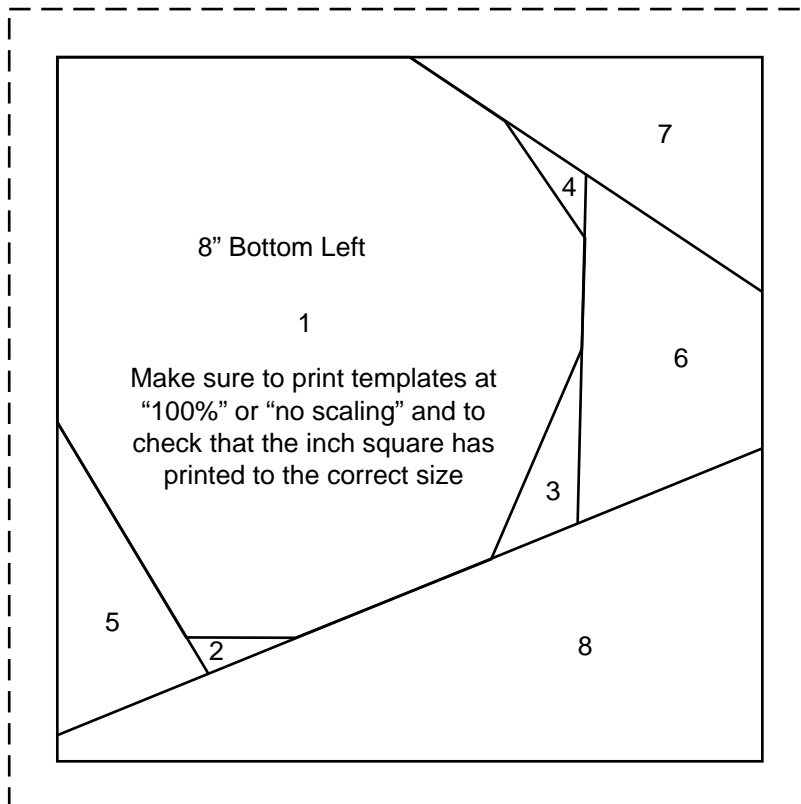
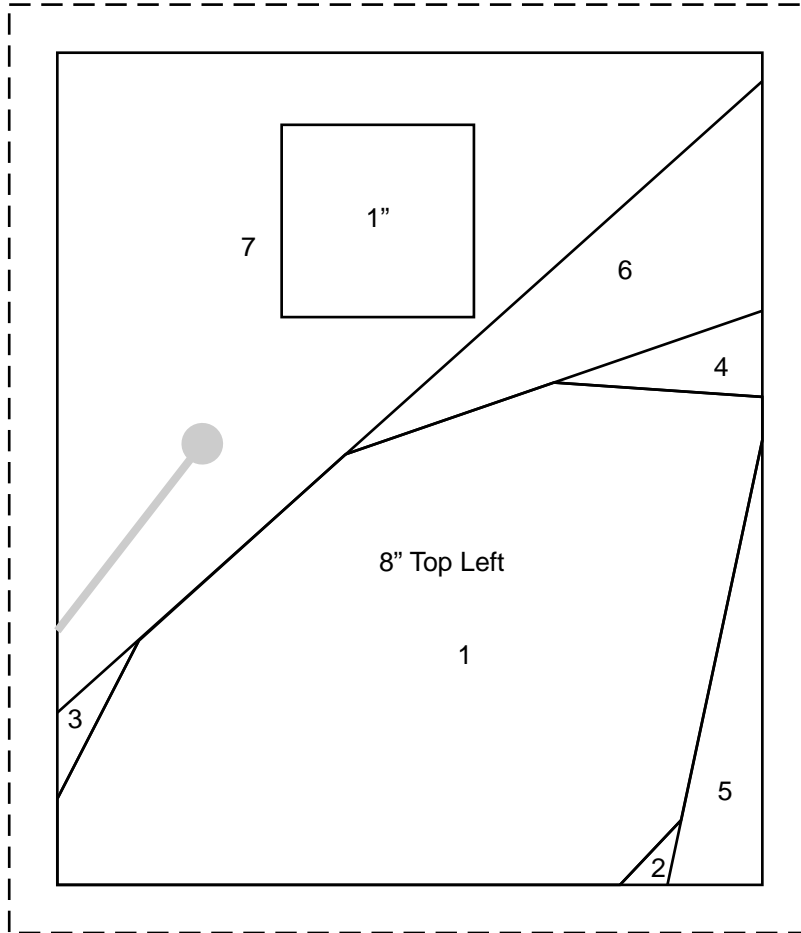


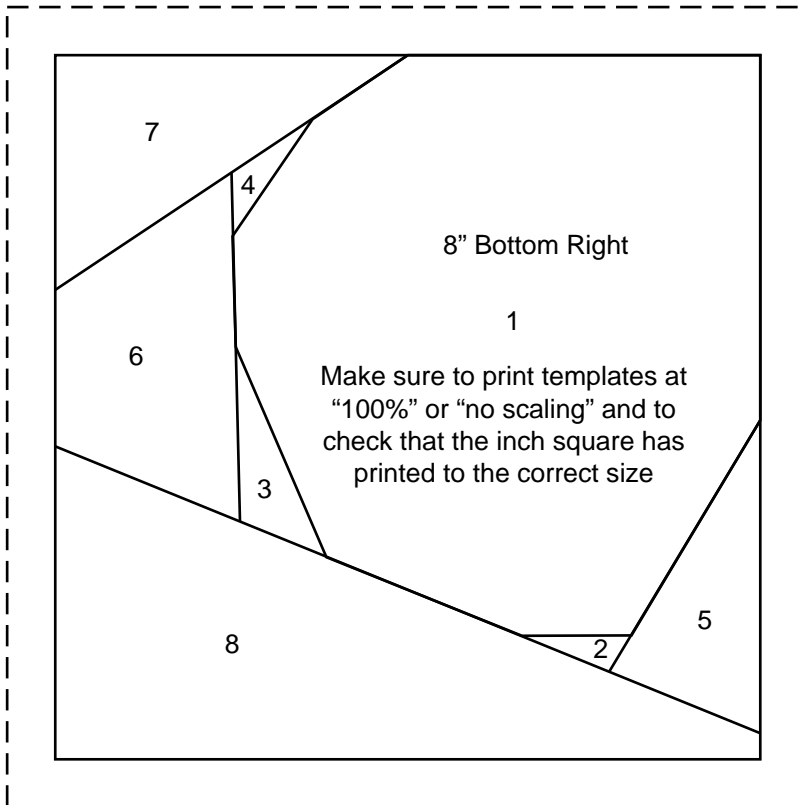
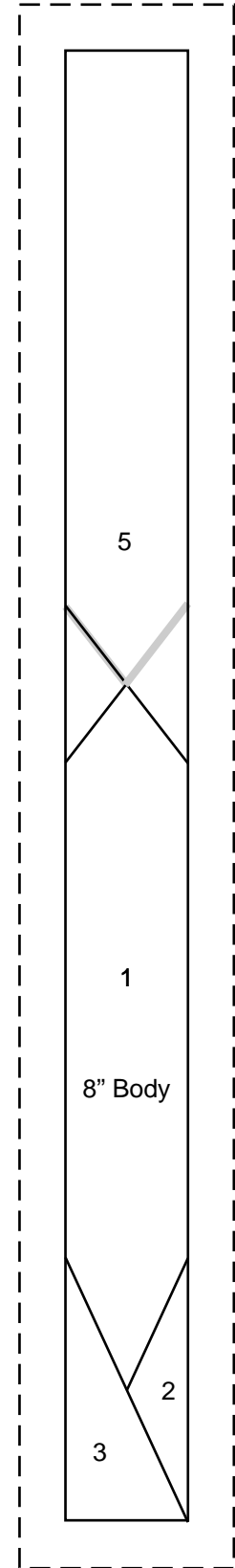
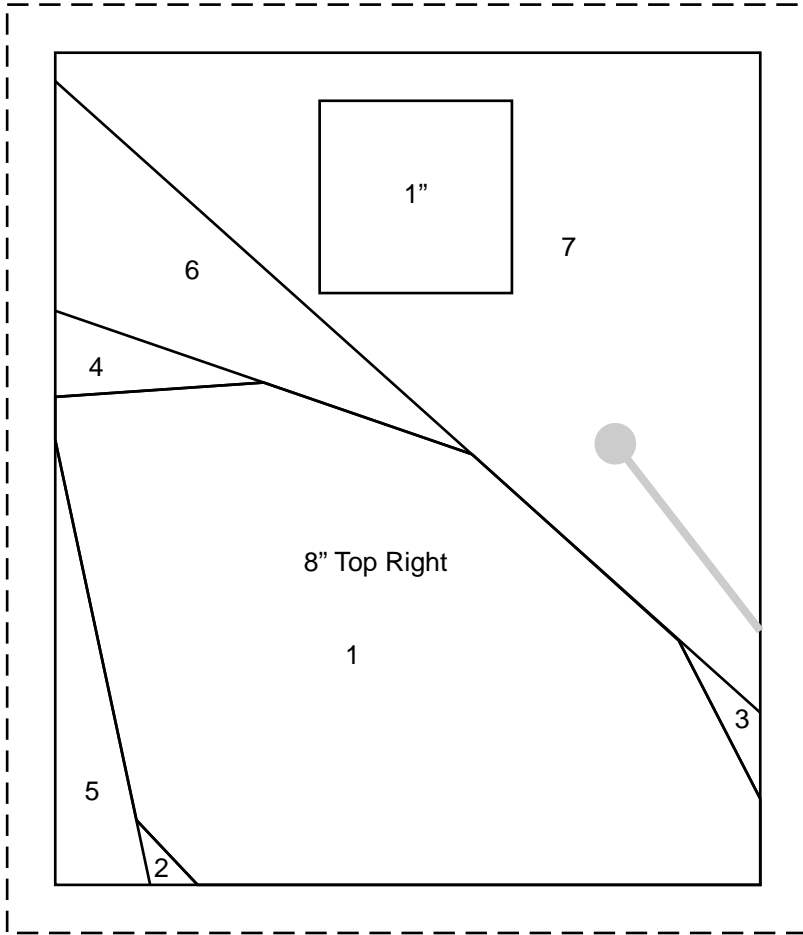


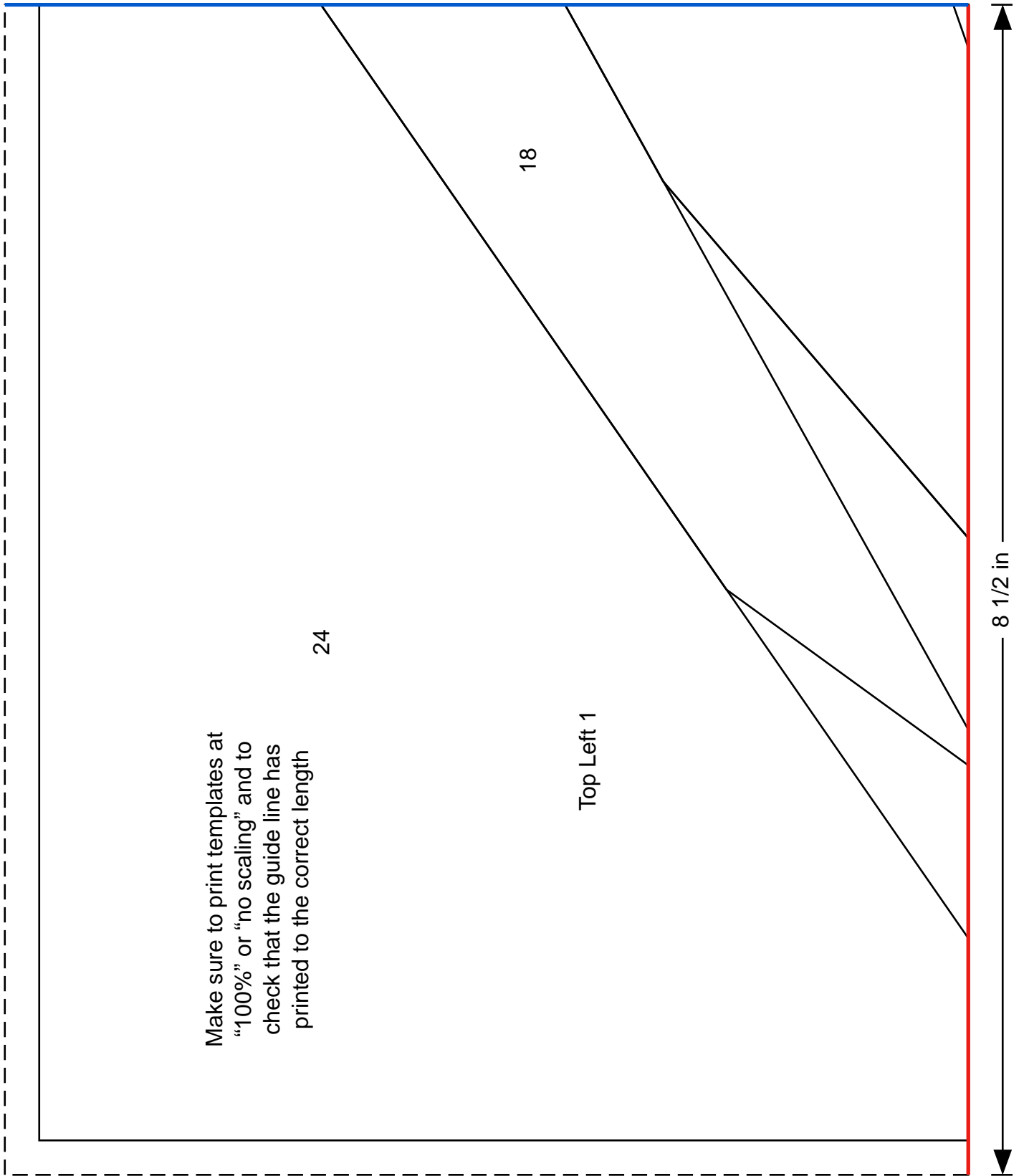


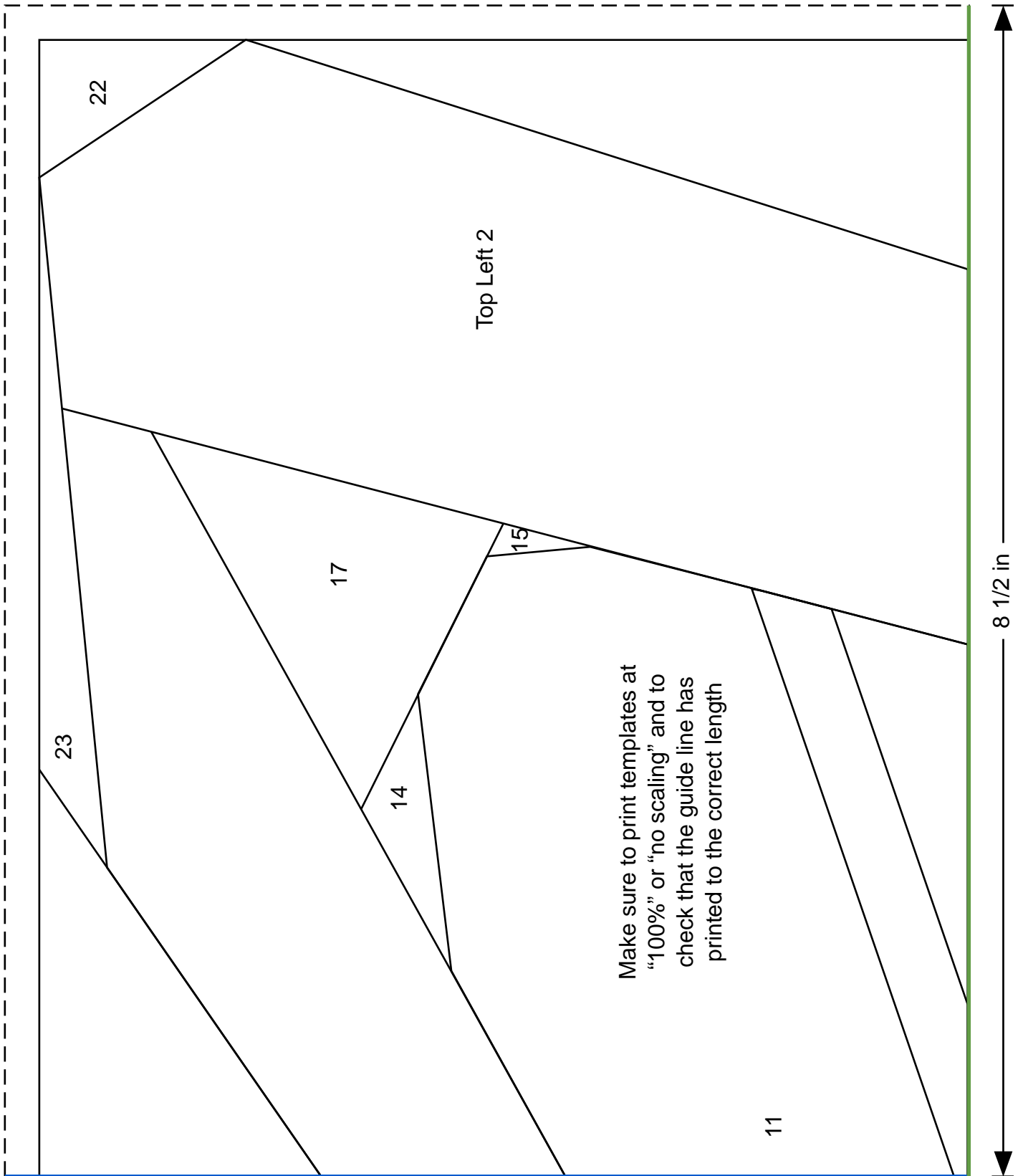




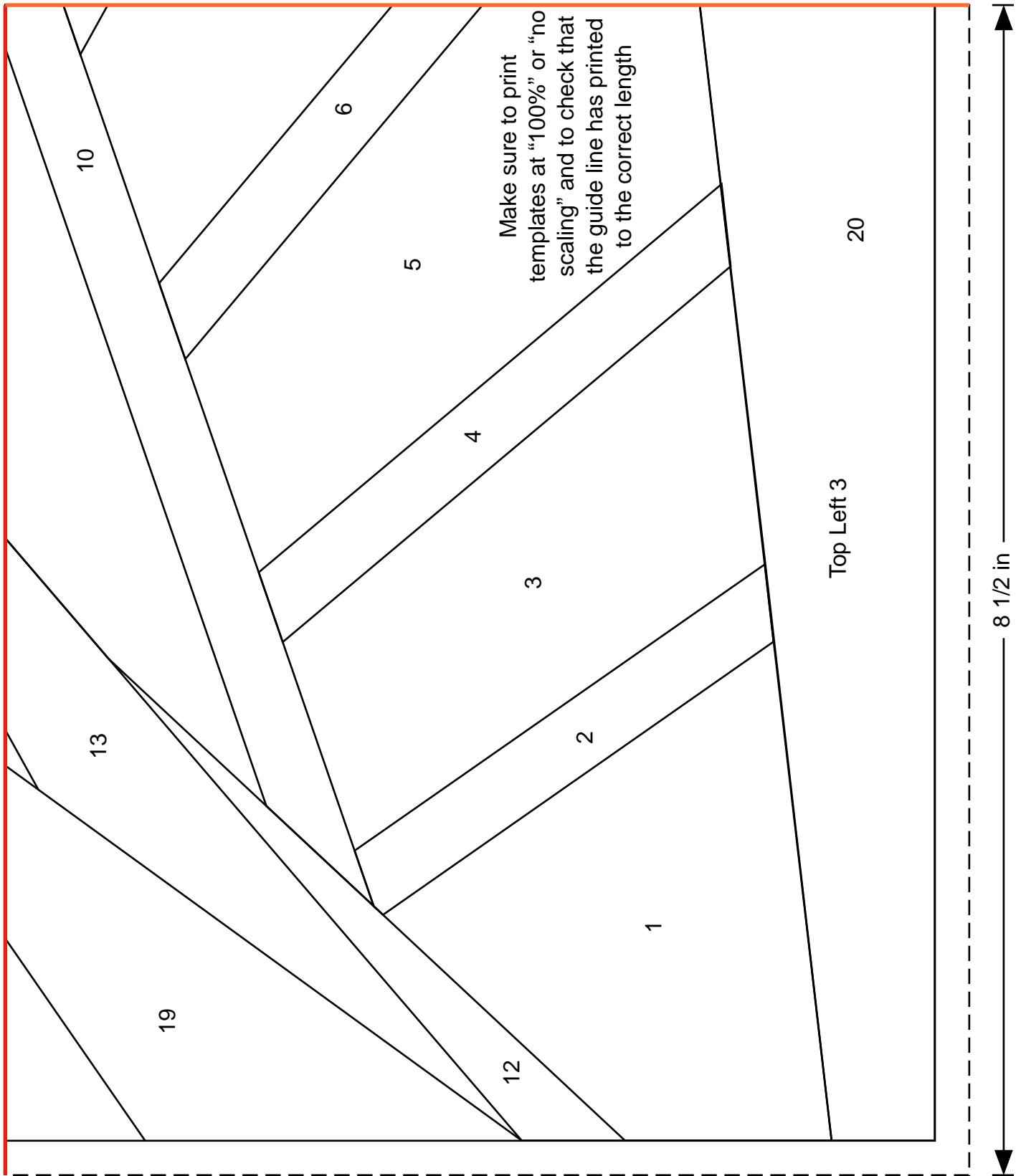


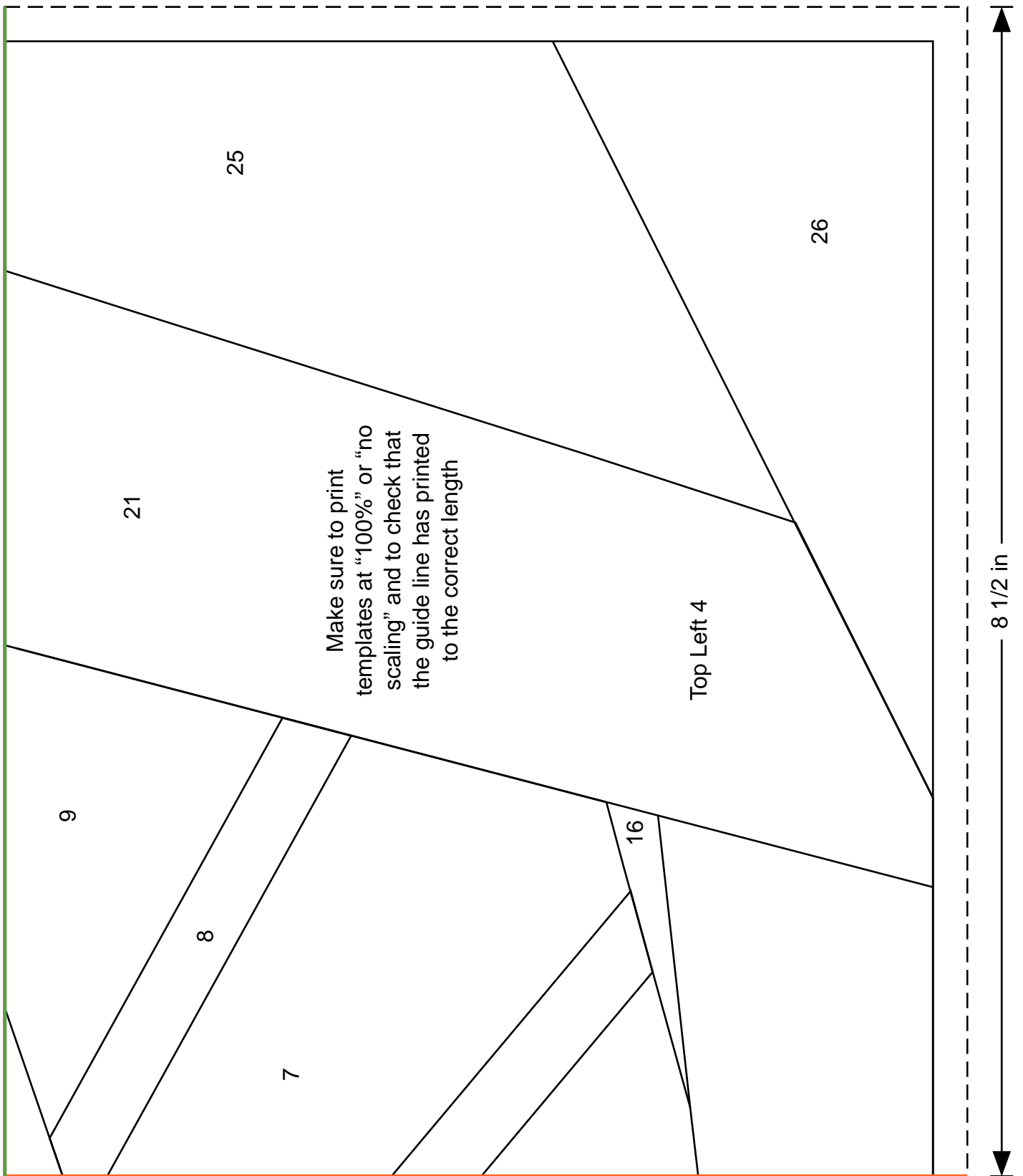


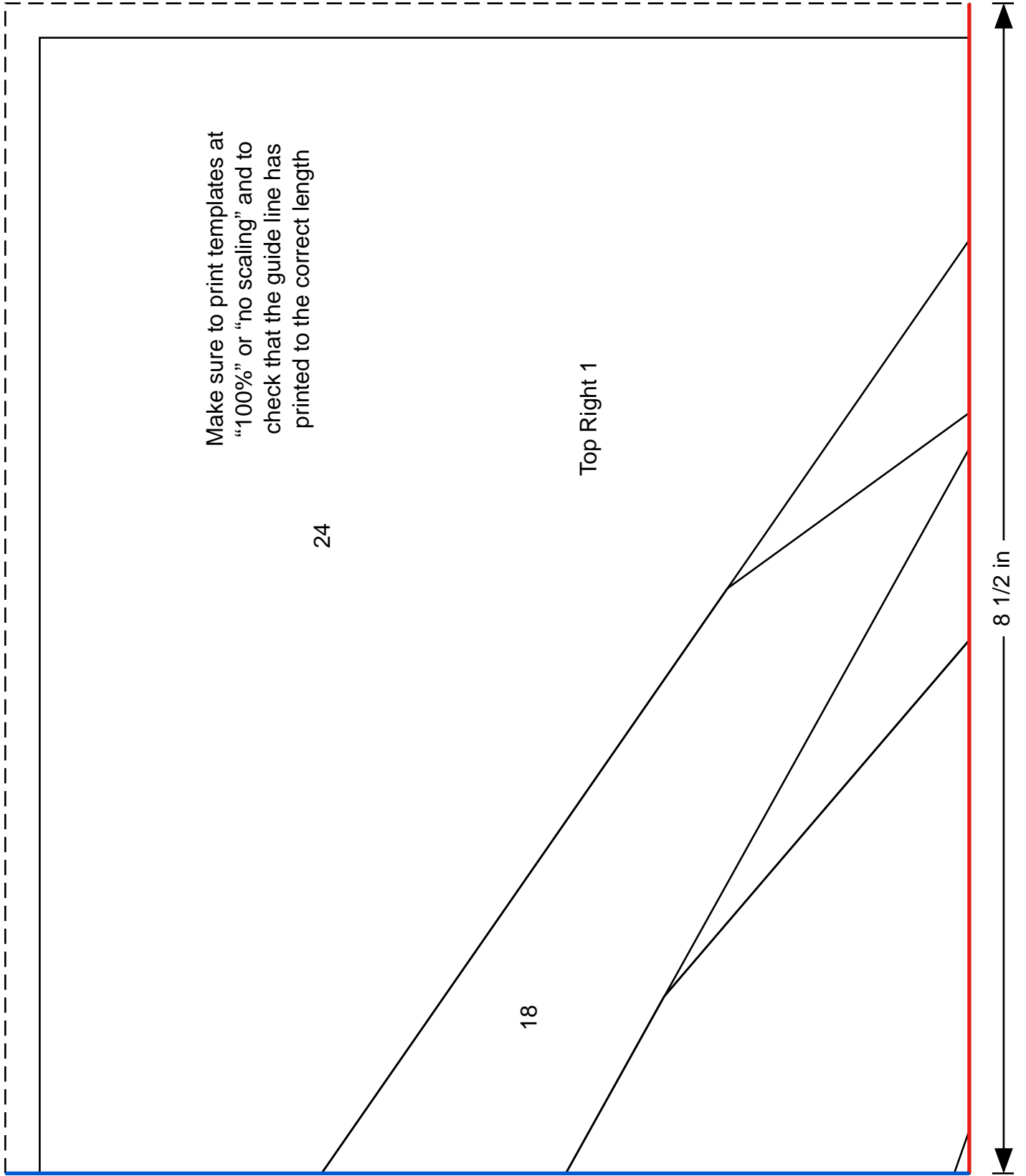












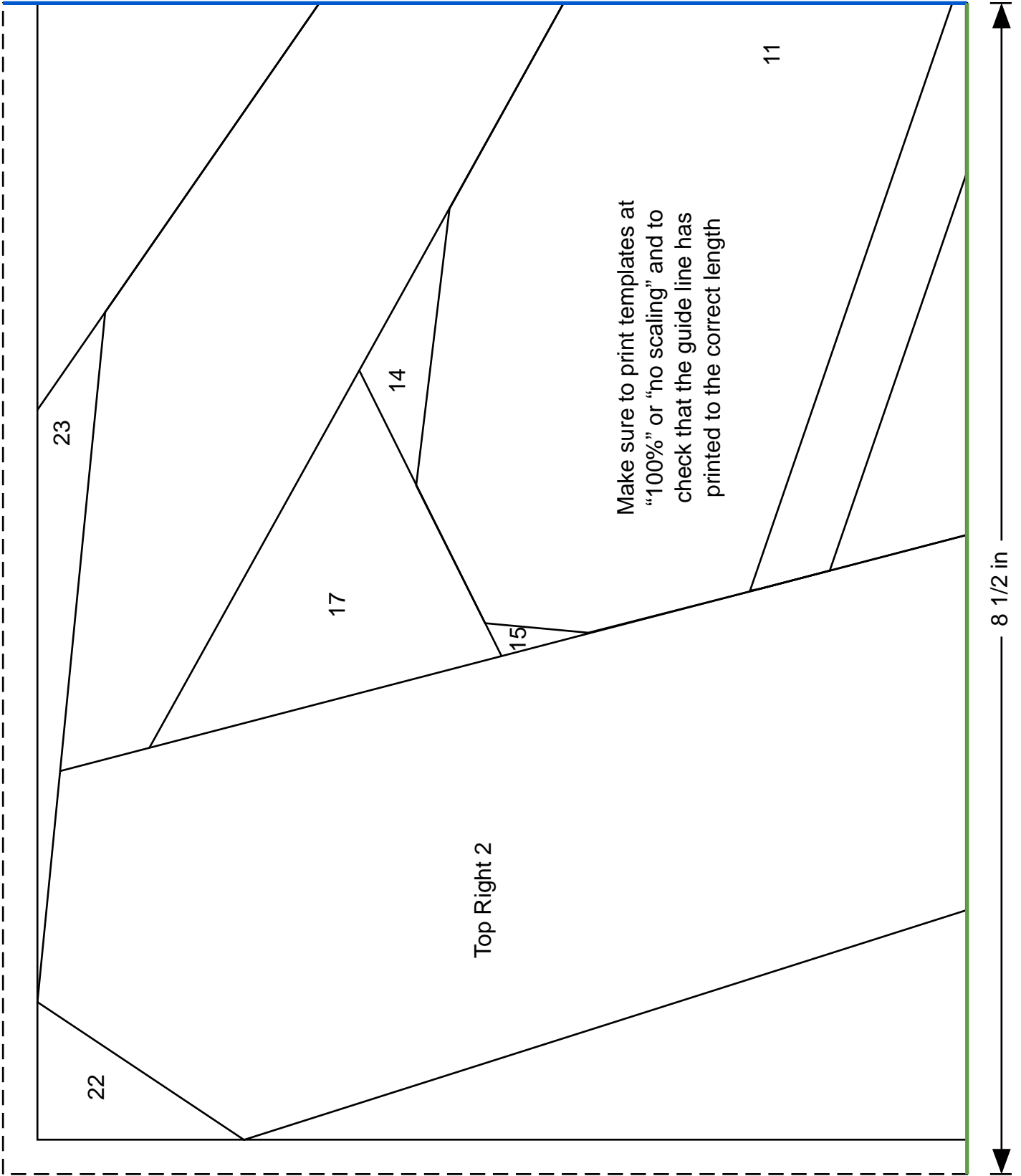
Make sure to print templates at  
 "100%" or "no scaling" and to  
 check that the guide line has  
 printed to the correct length

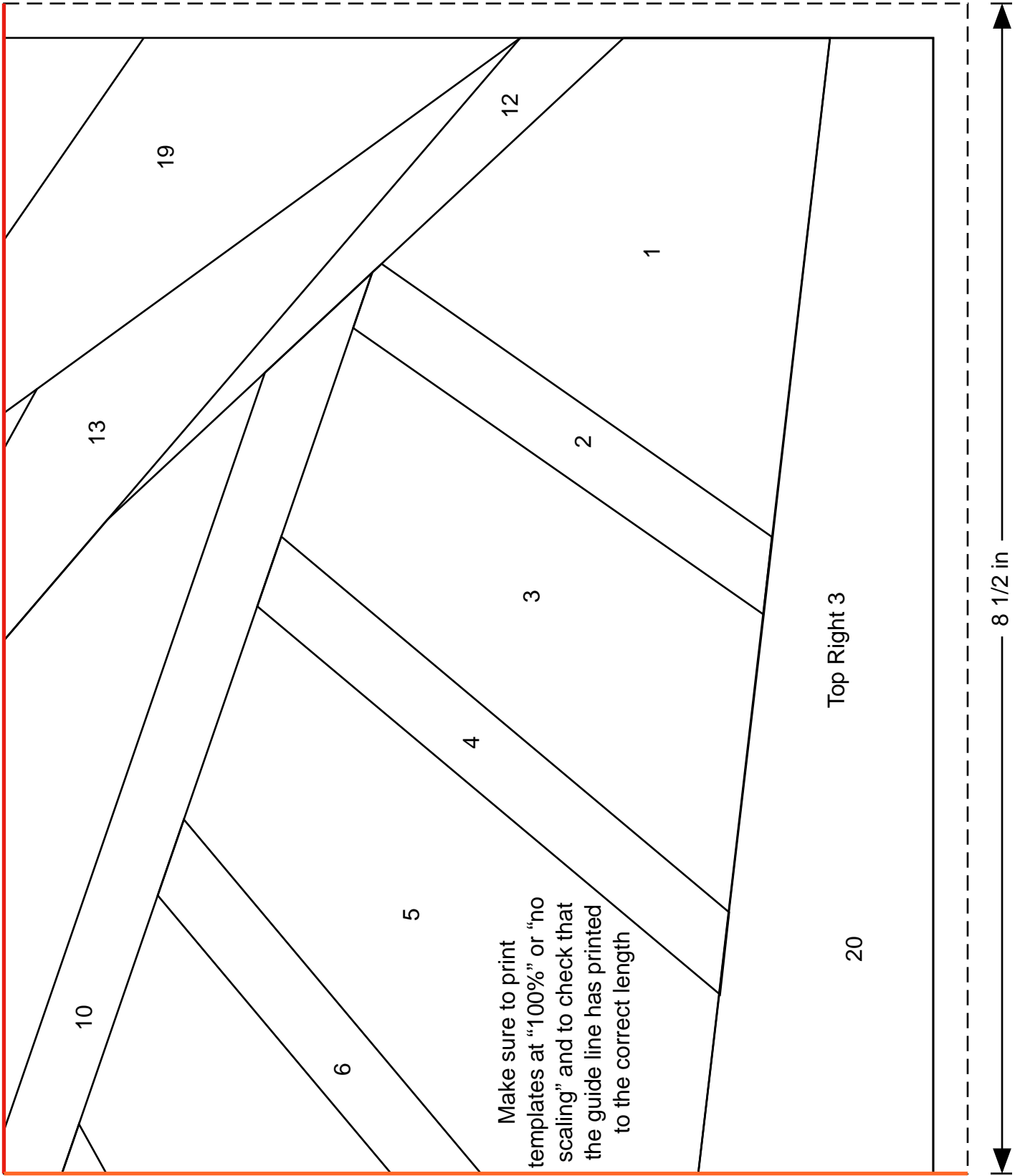
Top Right 1

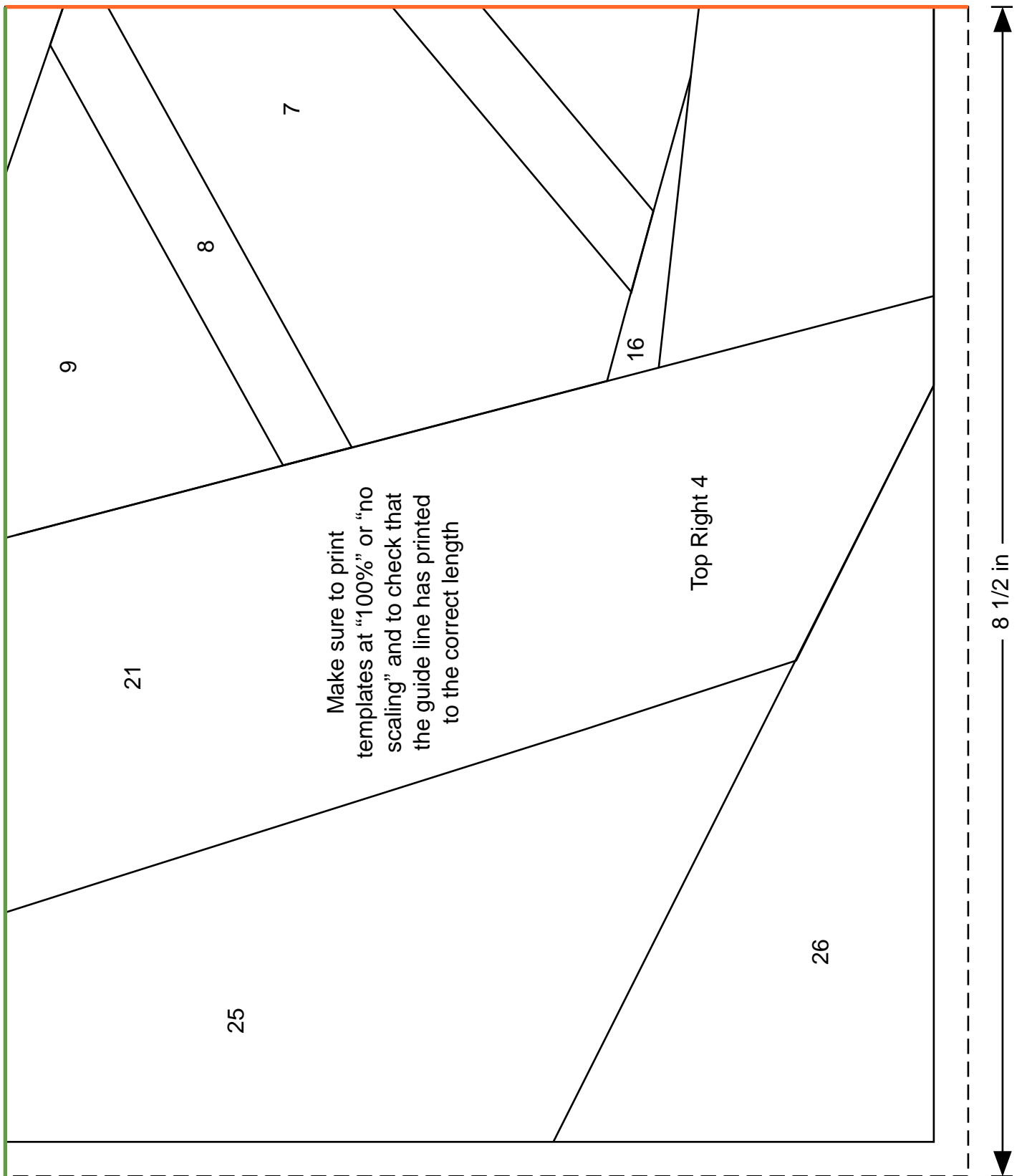
24

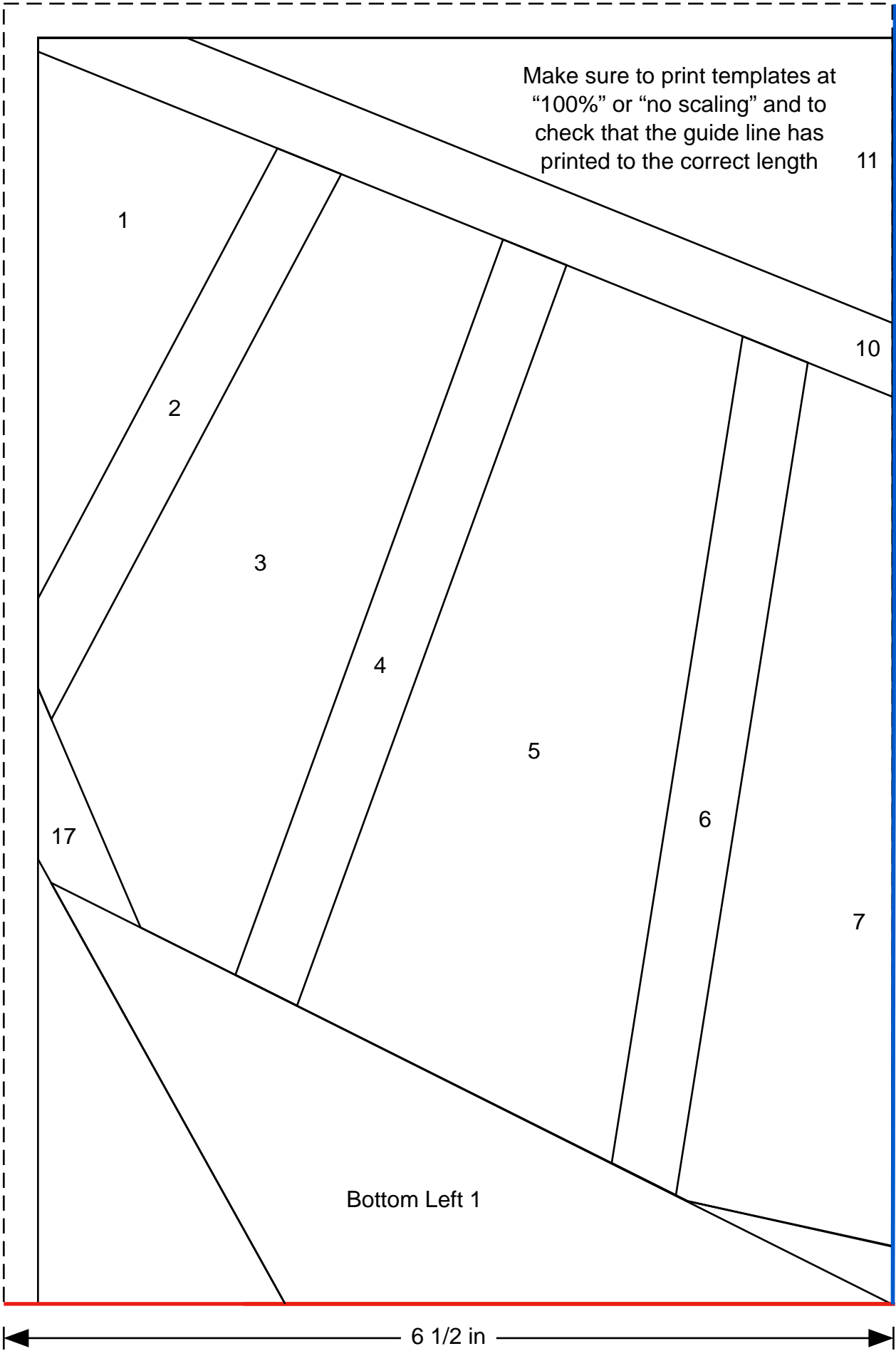
18

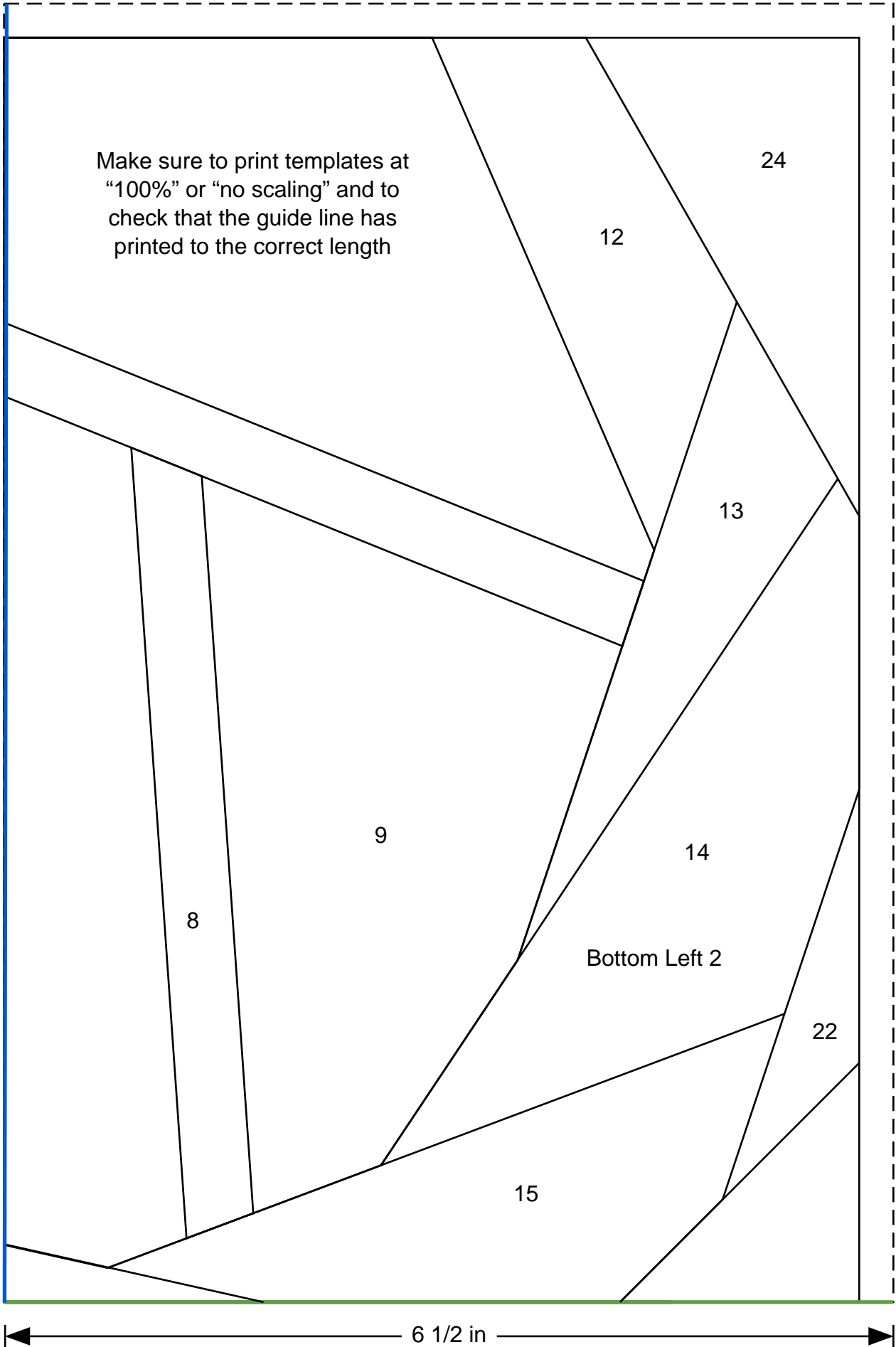
8 1/2 in



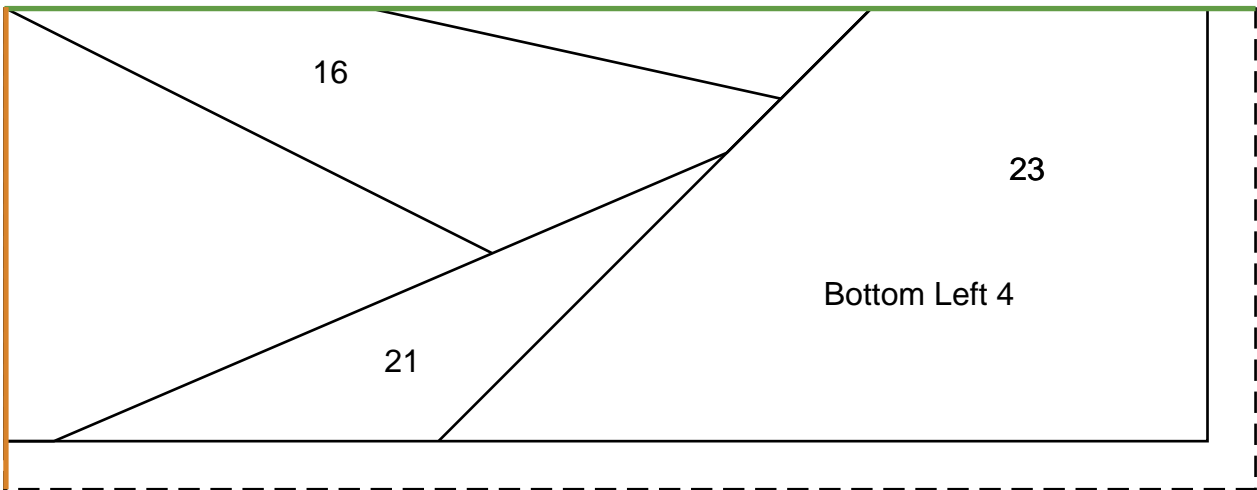
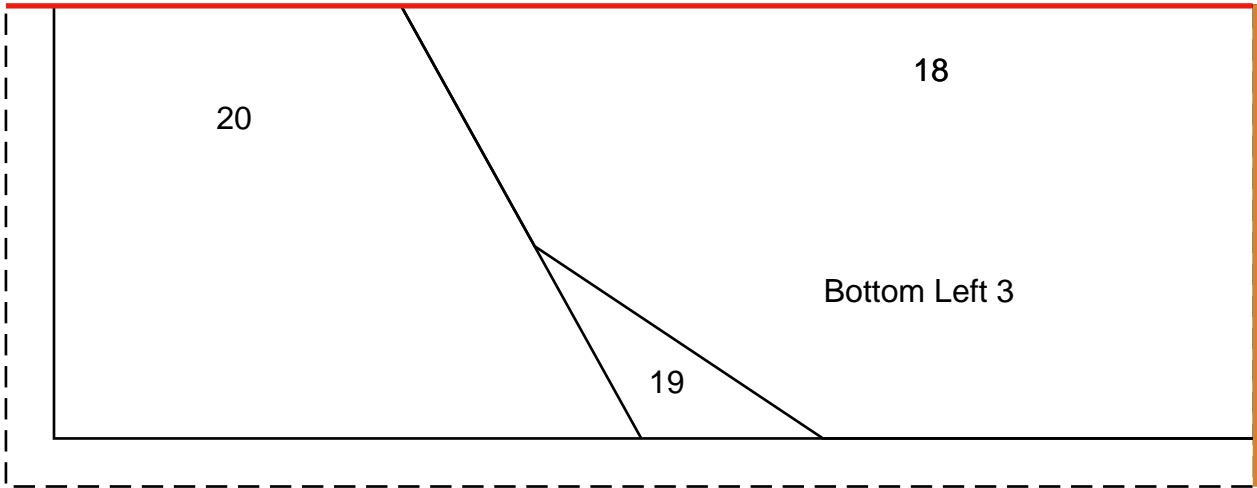




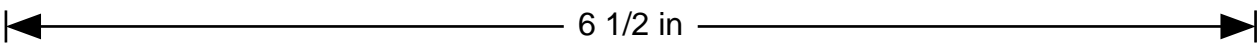




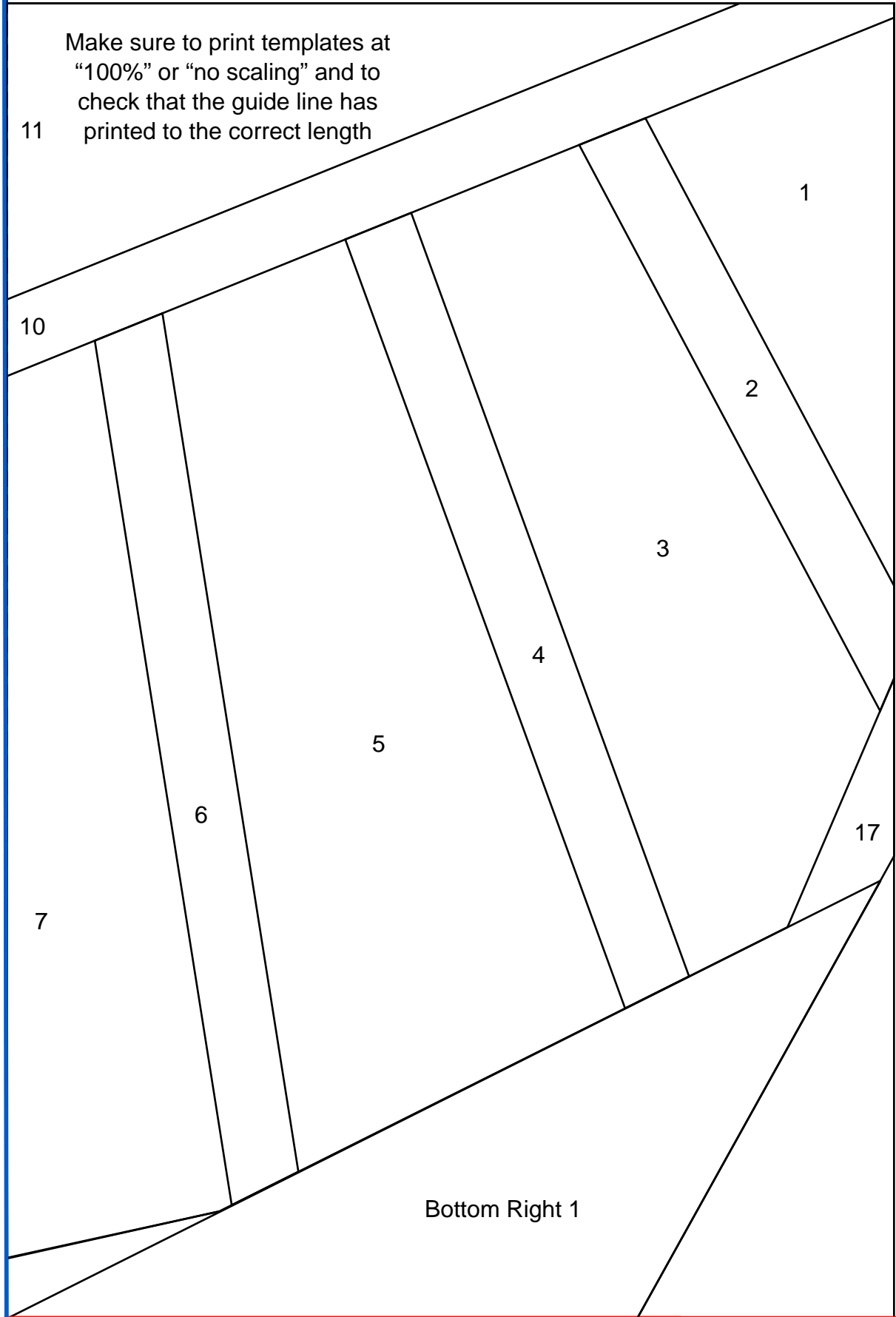




Make sure to print templates at "100%" or "no scaling" and to check that the guide line has printed to the correct length



Make sure to print templates at  
"100%" or "no scaling" and to  
check that the guide line has  
printed to the correct length



11

10

7

6

5

4

3

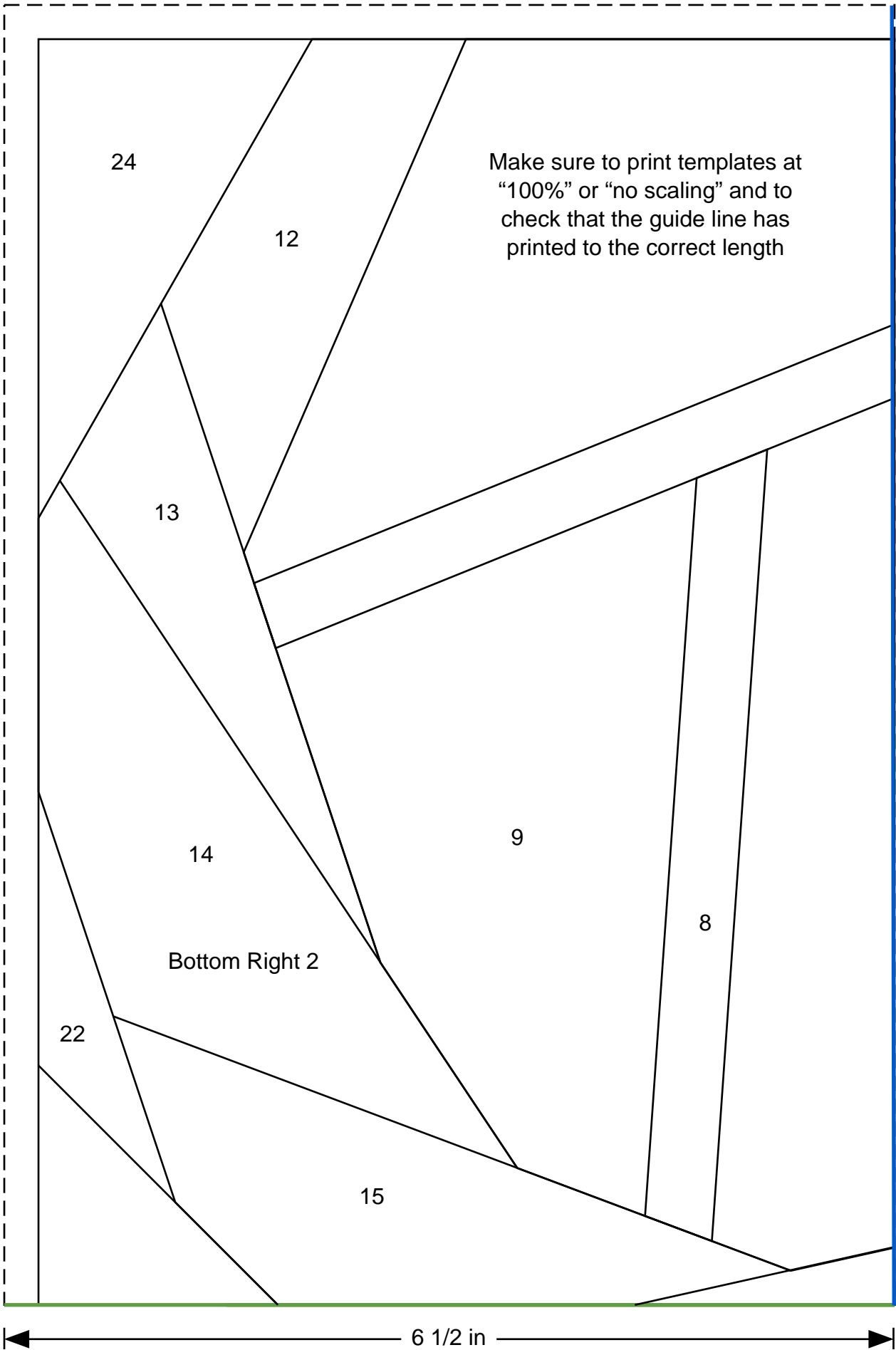
2

1

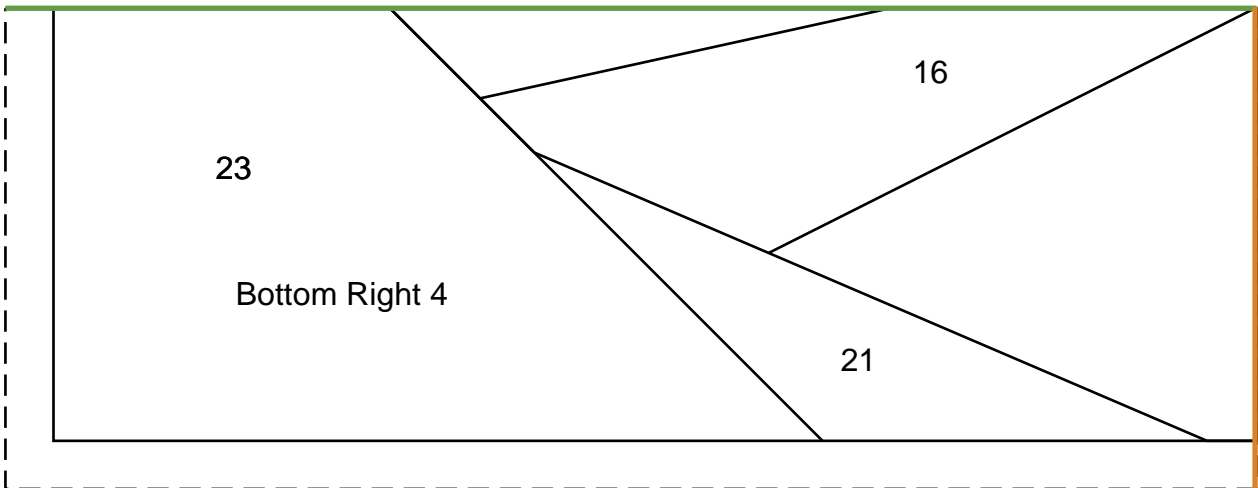
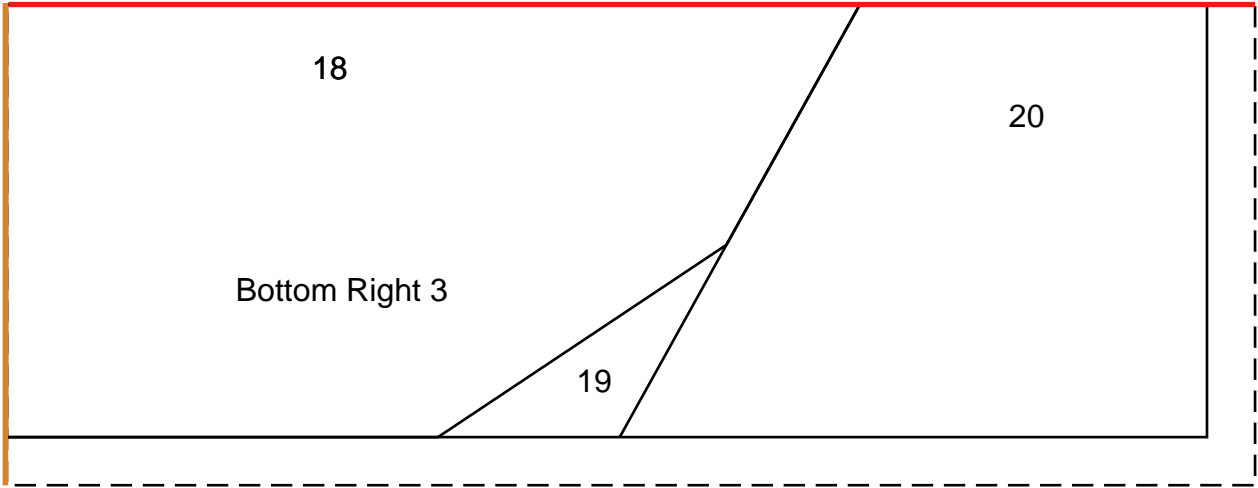
17

Bottom Right 1

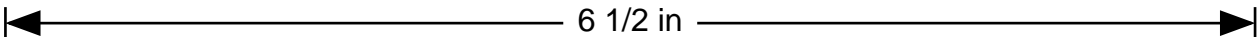
6 1/2 in

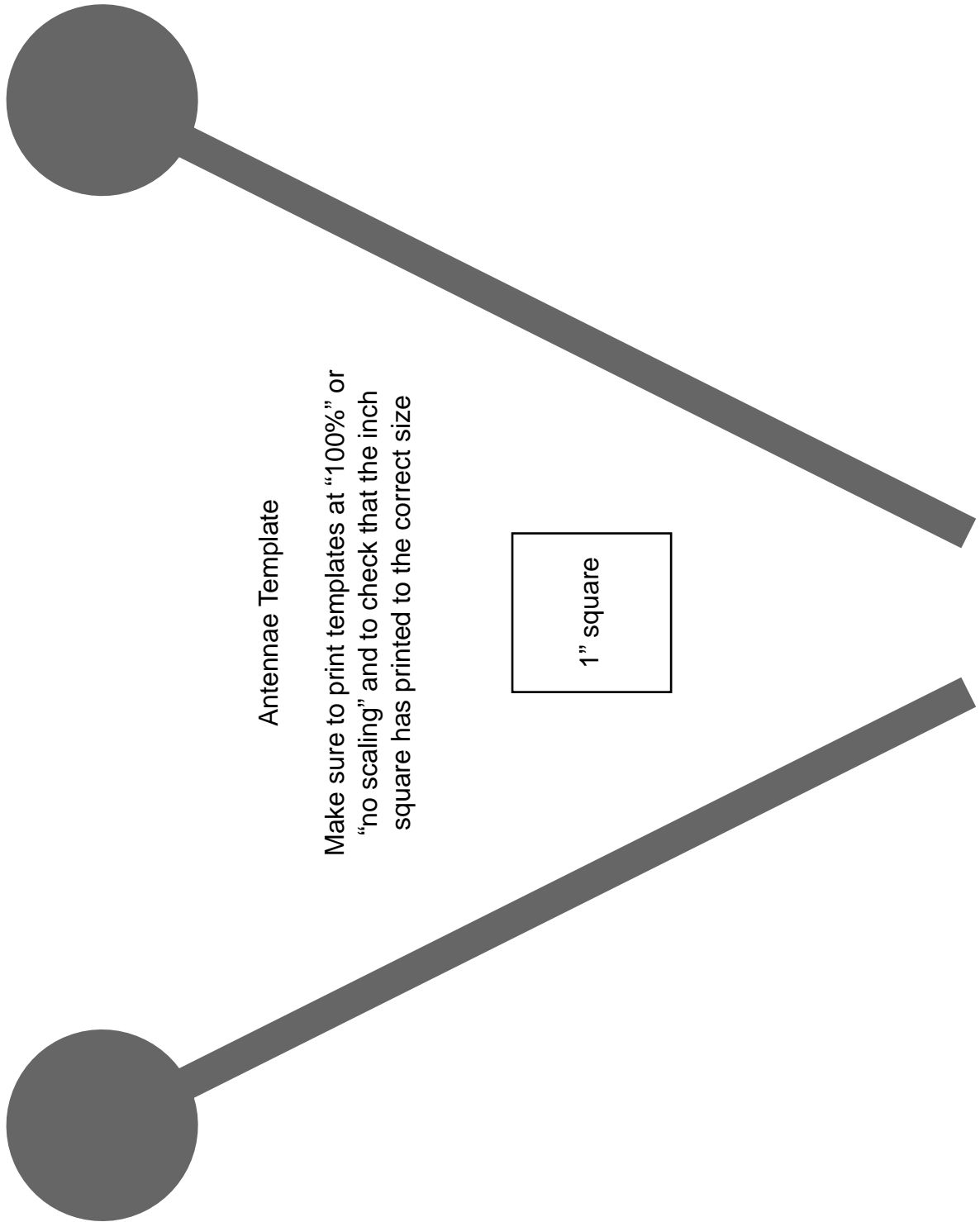


Make sure to print templates at "100%" or "no scaling" and to check that the guide line has printed to the correct length



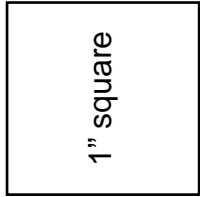
Make sure to print templates at "100%" or "no scaling" and to check that the guide line has printed to the correct length





Antennae Template

Make sure to print templates at "100%" or "no scaling" and to check that the inch square has printed to the correct size



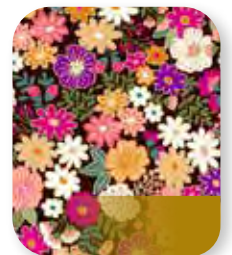
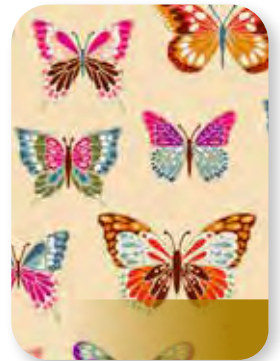
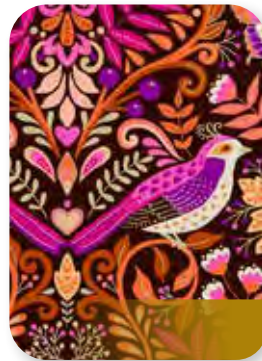
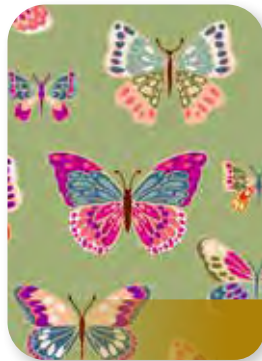
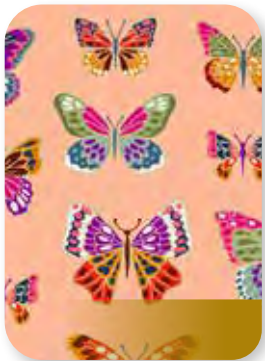
# LUXE

A Makower UK Collection

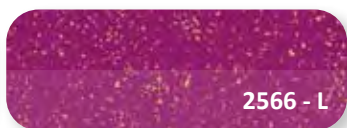


ALL DESIGNS FEATURE  
METALLIC GOLD DETAILING

19 prints, 4 Metallic Linen Textures  
September 2023 Delivery



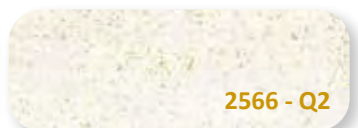
2566 - B10



2566 - L



2566 - P



2566 - Q2

Images for reference only, not correct for scale (approx 50%) or actual colour